





Označení dílů

- M** - fotoleptané kovové díly
- D** - obtisky
- W** - drát
- T** - hadička
- F** - folie
- ?** - volba
-  - zkrátit podle potřeby
-  - vyvrtat

Parts labelling

- M** - photoetched parts
- D** - decals
- W** - wire
- T** - tube
- F** - foil
- ?** - option
-  - cut as necessary
-  - drill

Poznámka - Pro čiré zasklení je možné folii v oknech po vklepení umýt štetcem navlhčeným vodou
Notice - You can wash foil in windows by water moistened brush for pellucid windows

Návod ke stavbě

Při stavbě postupujte podle instruktážních obrázků.

Fotografie ze stavby modelu najdete na www.plusmodel.cz

Instructions

Follow the instruction drawings the assembly.

Photos of model buiding you can find on www.plusmodel.cz

Upozornění: Během opracování může vznikat prach, který může dráždit dýchací cesty. Použijte ochranu očí při odstříhování kovových dílů.

Notice: Machining can produce dust witch can be irritating to the respiratory tract. Metal parts should be cut off using protection eyesight.

Fotografie ze stavby modelu si můžete stáhnout jako .zip soubor na adrese <https://www.plusmodel.cz/en/Sovetsky-traktor-bagr-Belorus>

You can download photos of the model construction as a .zip file at <https://www.plusmodel.cz/en/Sovetsky-traktor-bagr-Belorus>

Plus Model s.r.o
Jižní 56, 370 10 České Budějovice
Czech Republic
<http://www.plusmodel.cz>
e-mail: plusmodel@plusmodel.cz

338

plusmodel

1/35

Soviet Earthmover BELORUS



Historie

Traktorový bagr Bělorus IOM3-6M byl vyráběn v Minském traktorovém závodě v 60. a 70. letech 20. století a byl velmi hojně používán ve všech zemích RVHP a dalších zemích východního bloku. Pro svou univerzálnost a spolehlivost byl velmi oblíben a velké množství různých variant je používáno dodnes.

Technická data

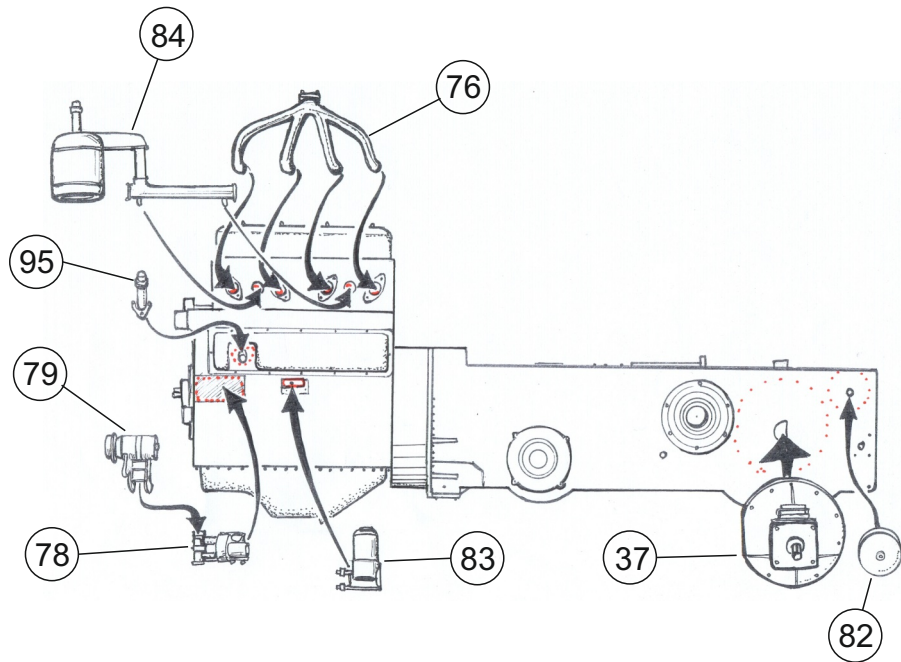
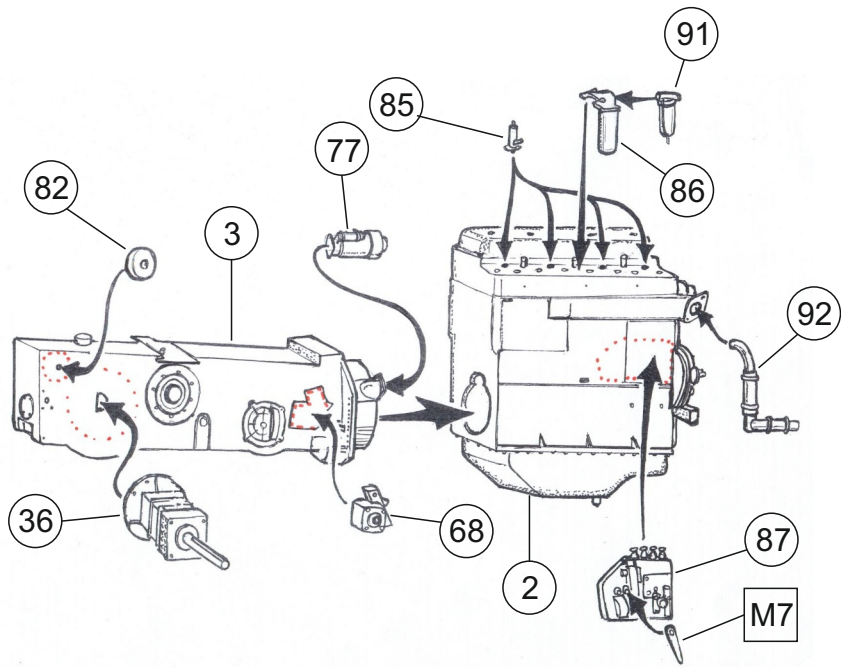
Výkon motoru - 60 HP
Maximální rychlost - 19 km/h
Hmotnost - 5700 kg
Délka v transportní poloze - 6,6 m
Rozsah otáčení zadního ramene - 160°

History

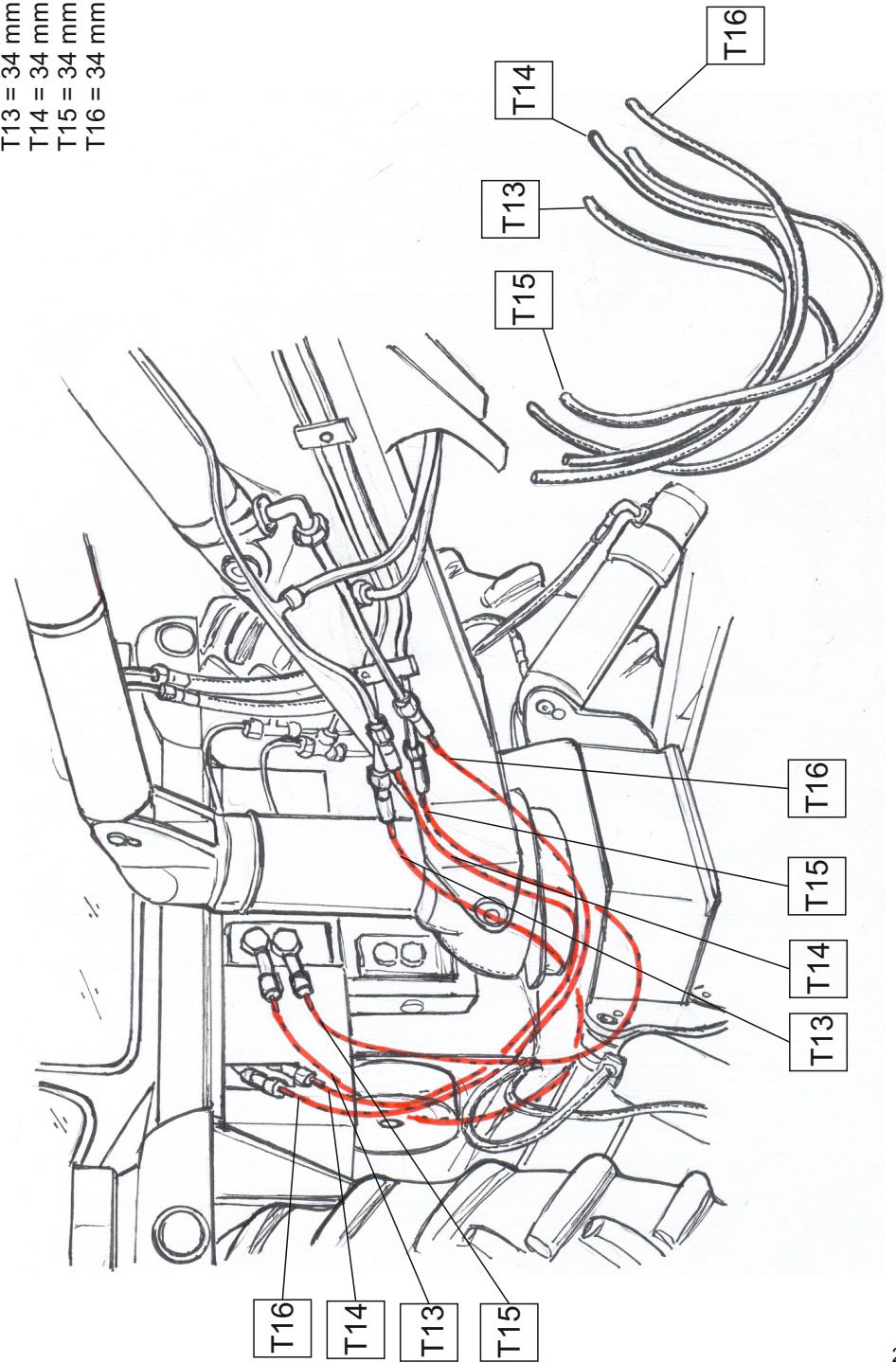
Soviet earthmover Belarus IOM3-6M was produced in Minsk Tractor Works in 60th and 70th years of 20. century and it was fully used in all former Eastern block. It was very popular for its universality and reliability. Many vehicles in various variants are used up to this days.

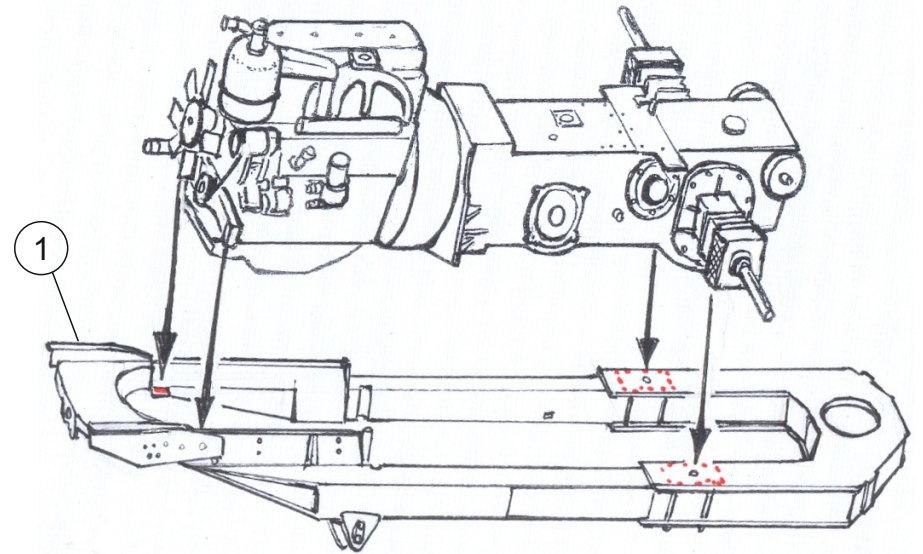
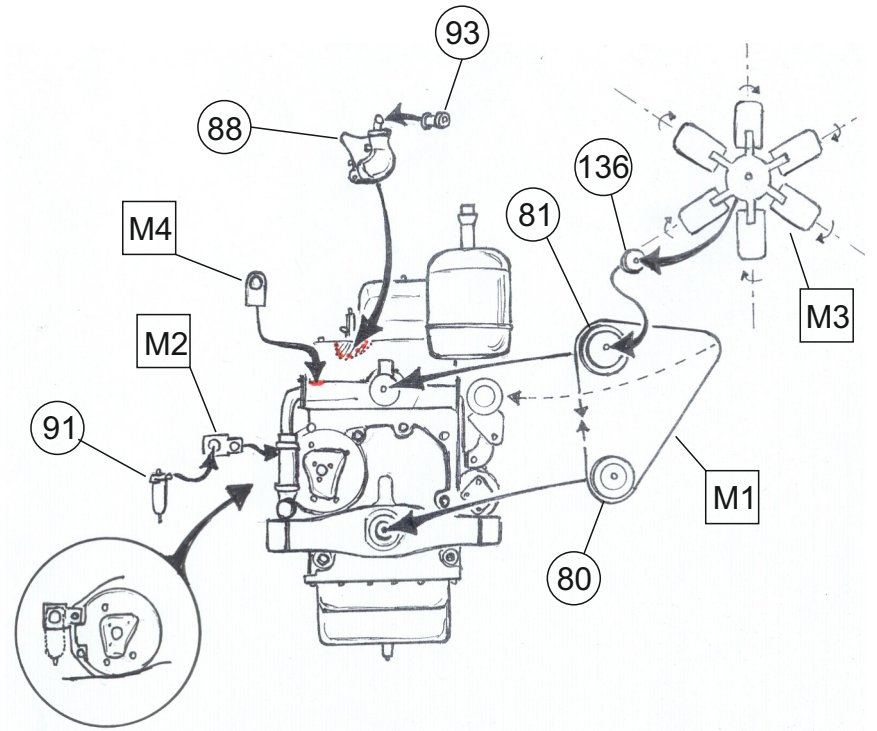
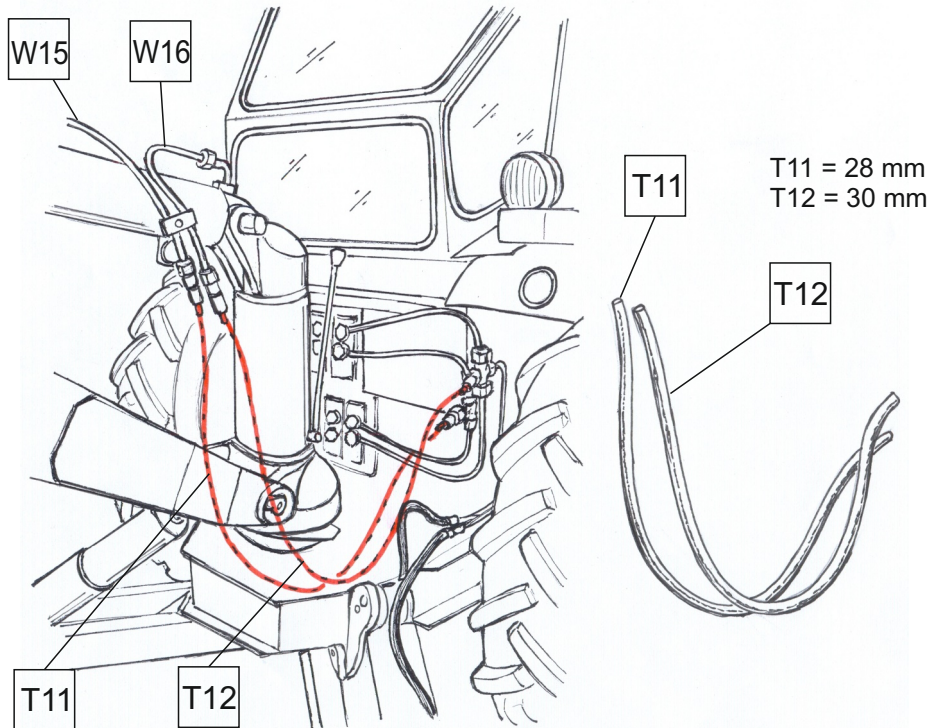
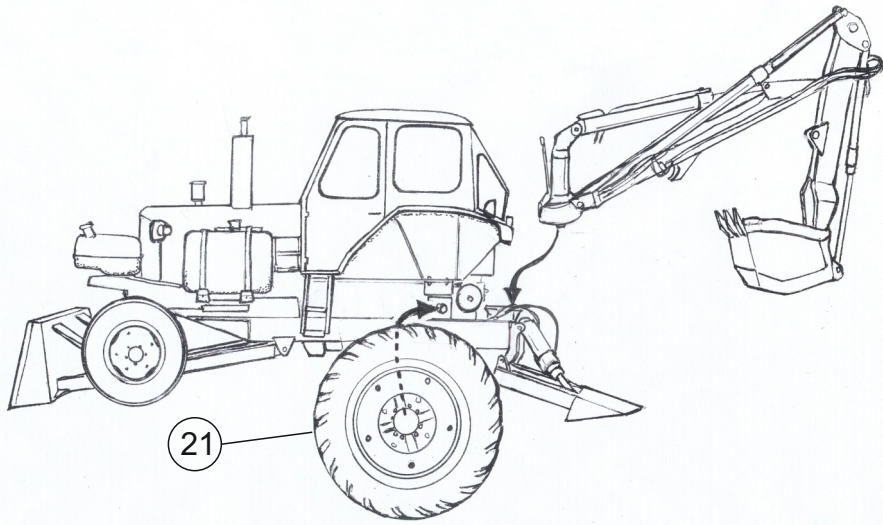
Technical data

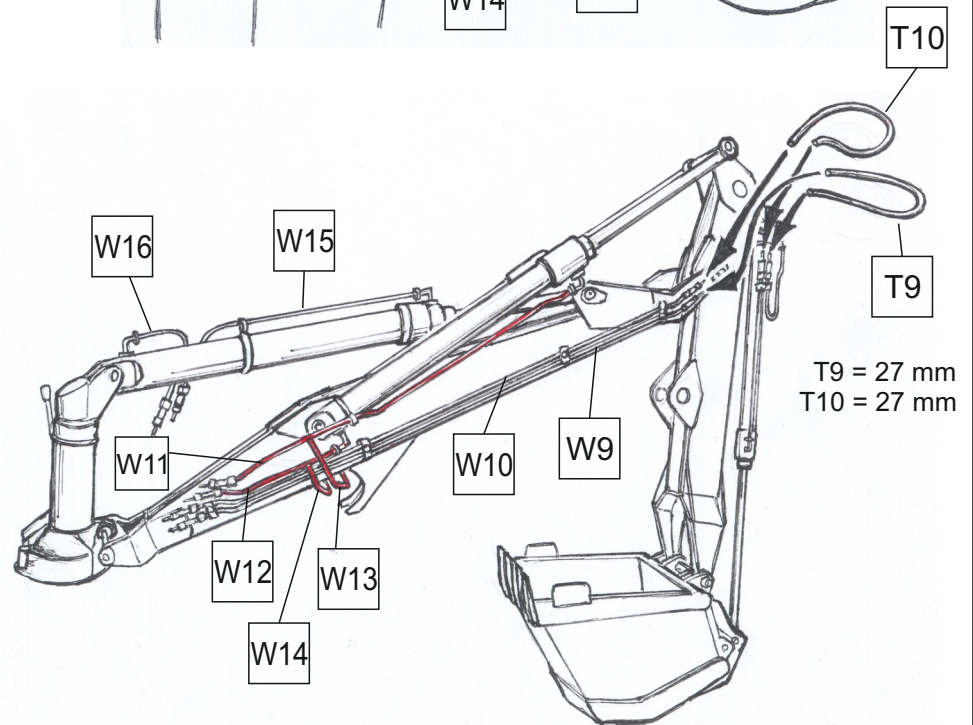
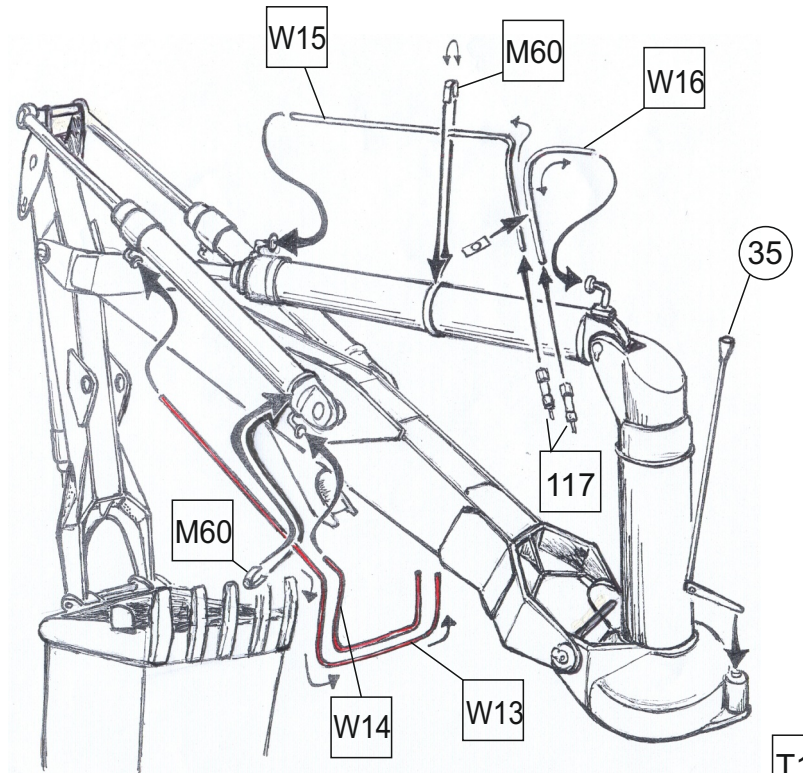
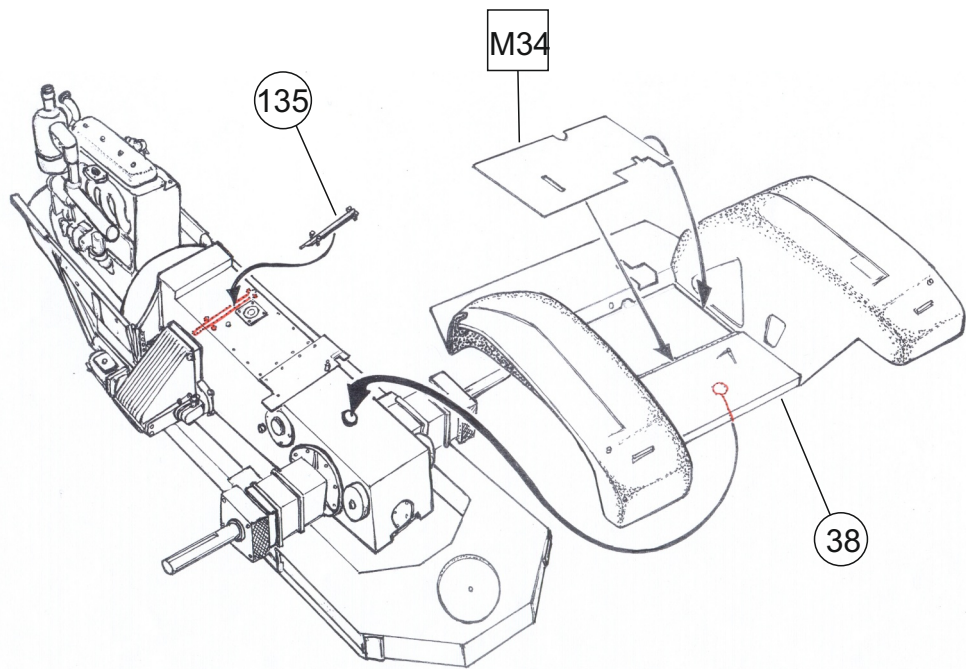
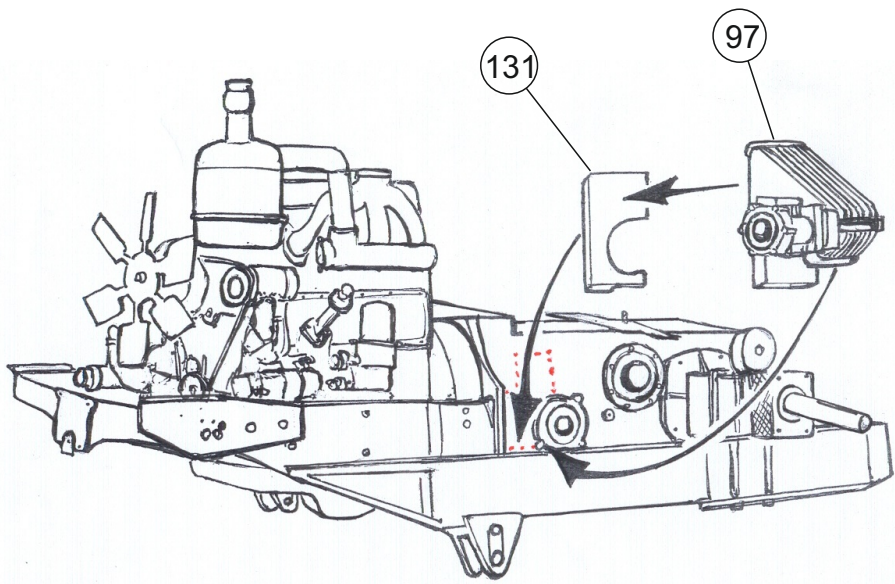
Engine power - 60 HP
Maximum speed - 19 km/h
Total weight - 5700 kg
Lenght for transport - 6,6 m
Range of rear gib rotation - 160°



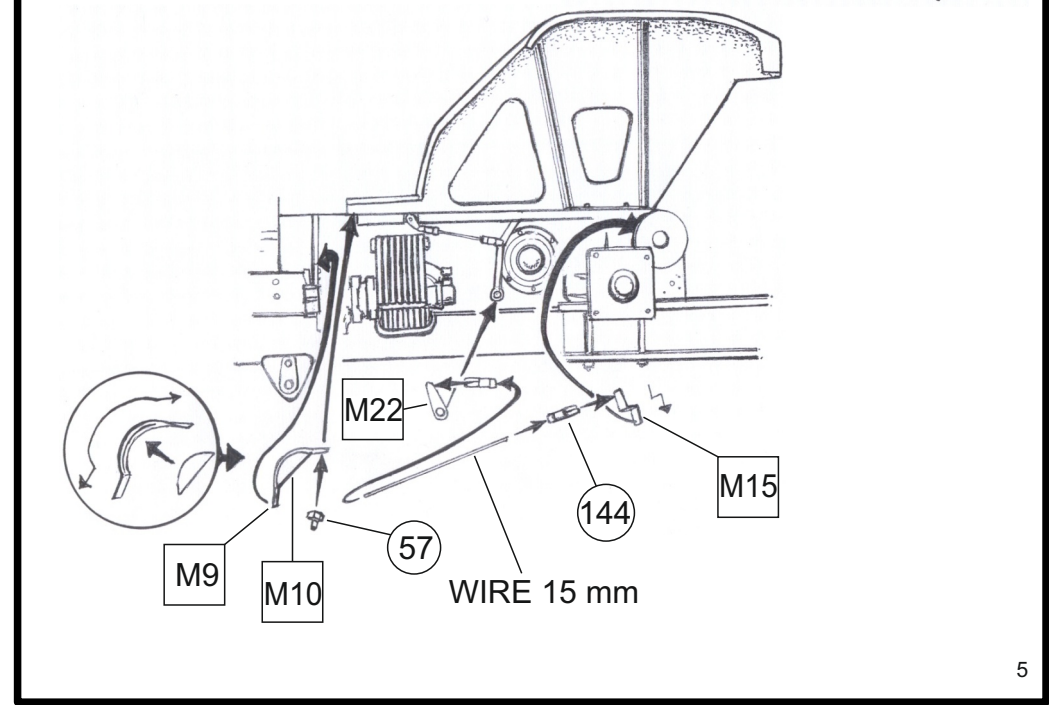
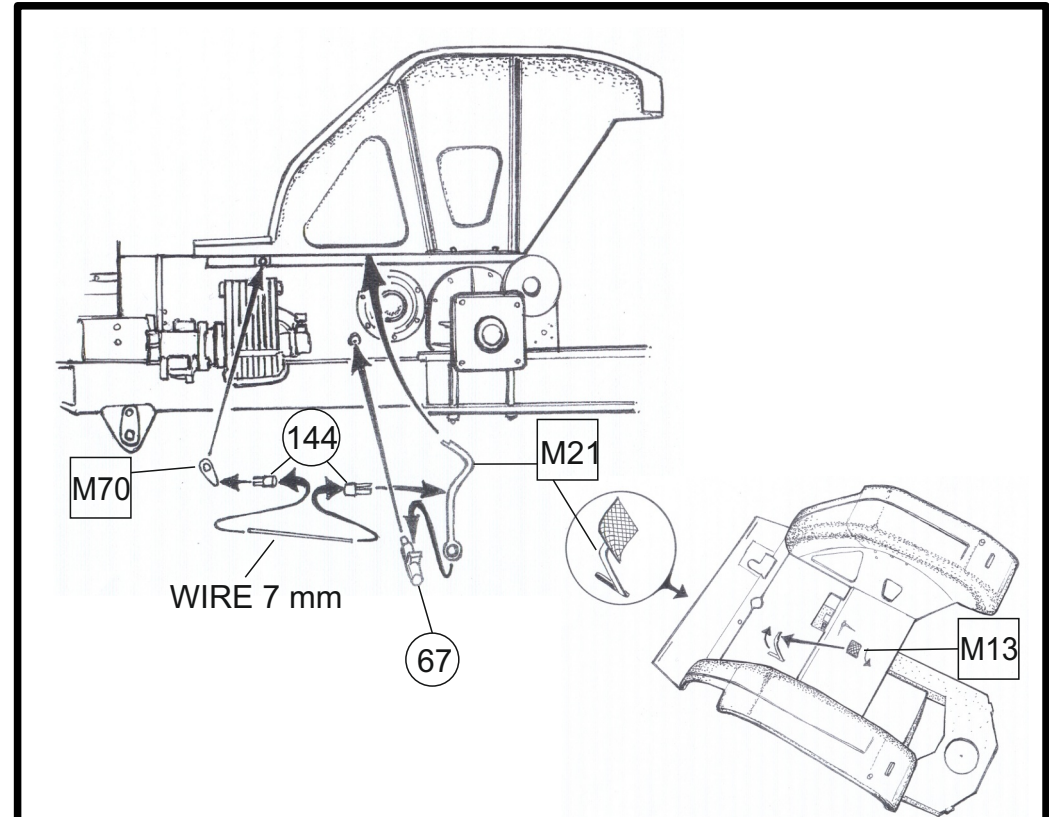
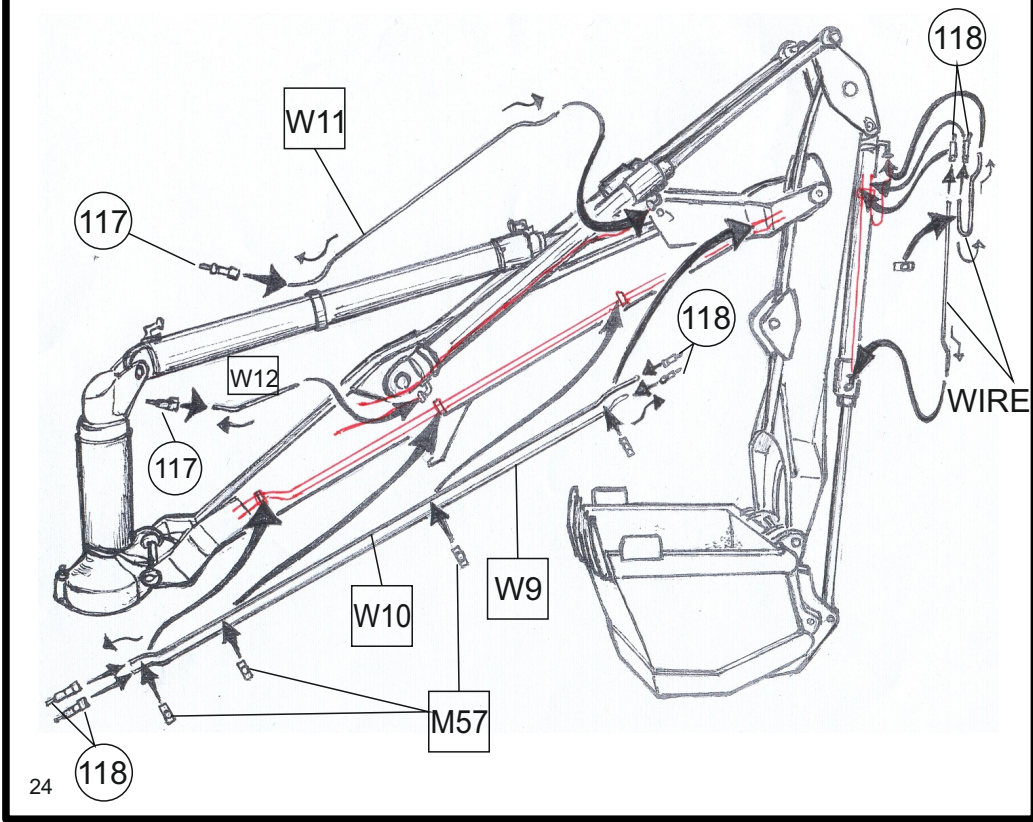
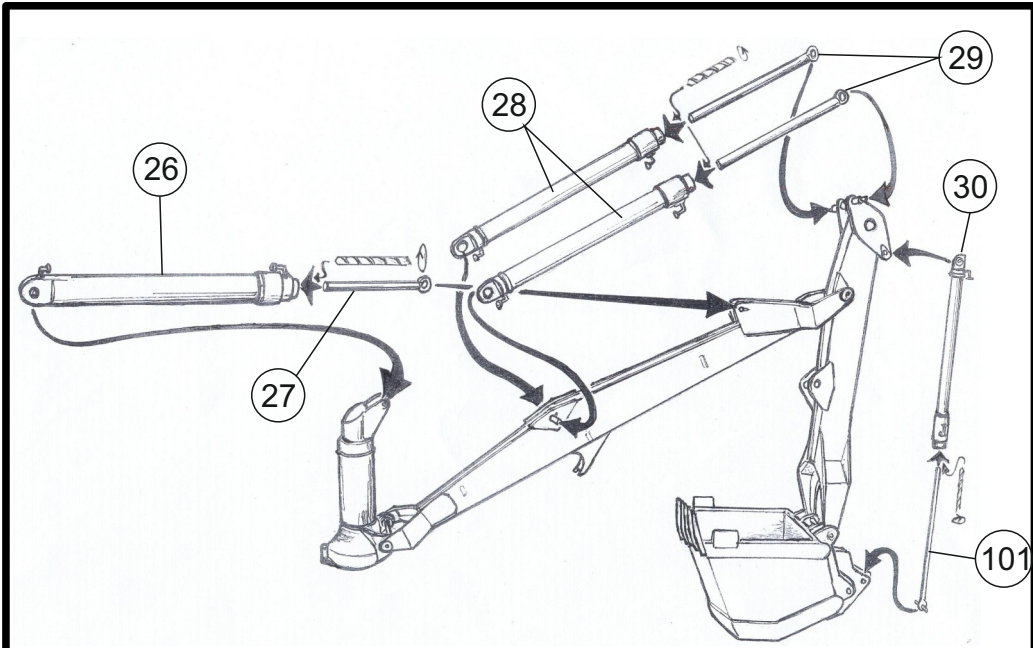
T13 = 34 mm
 T14 = 34 mm
 T15 = 34 mm
 T16 = 34 mm

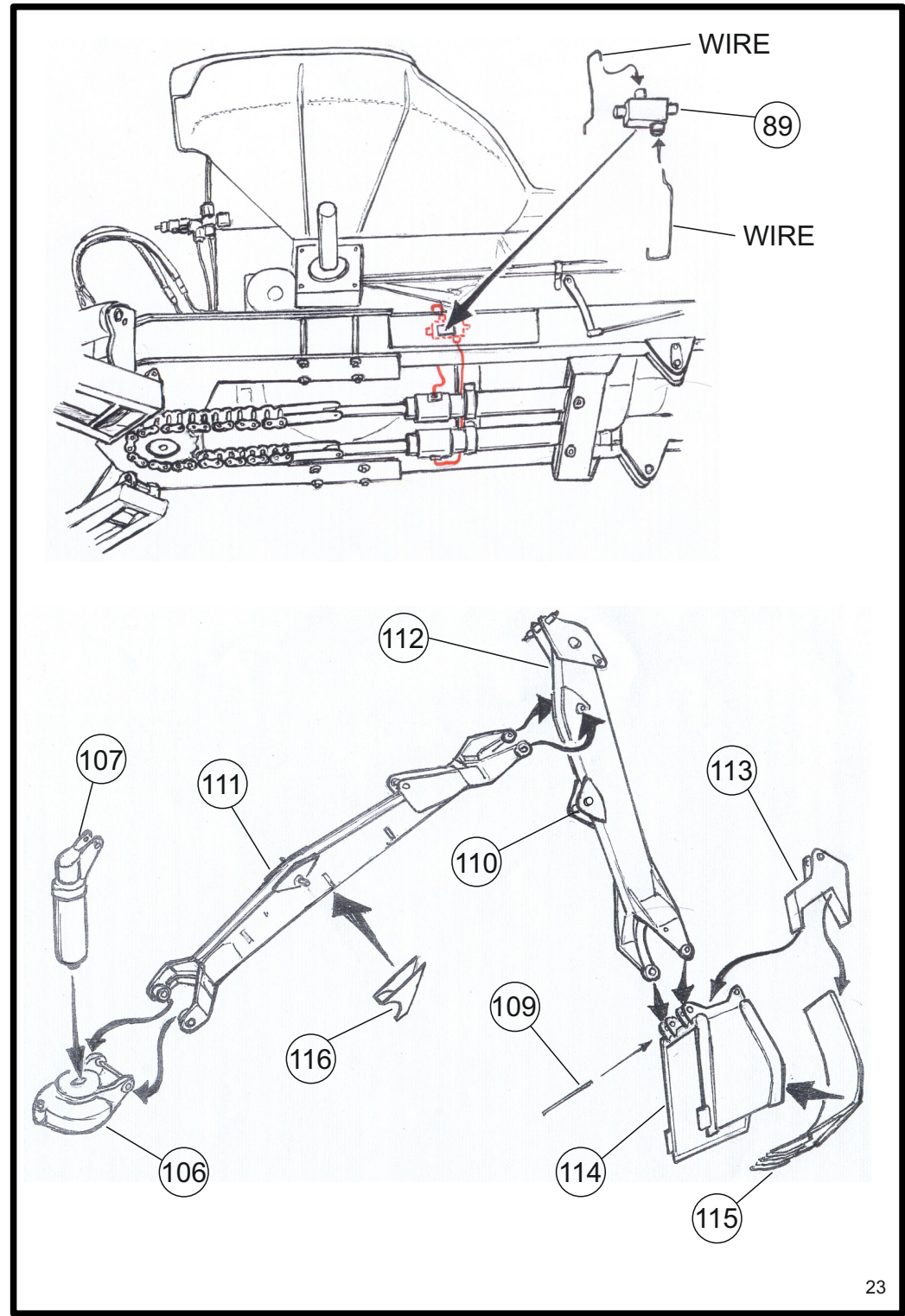
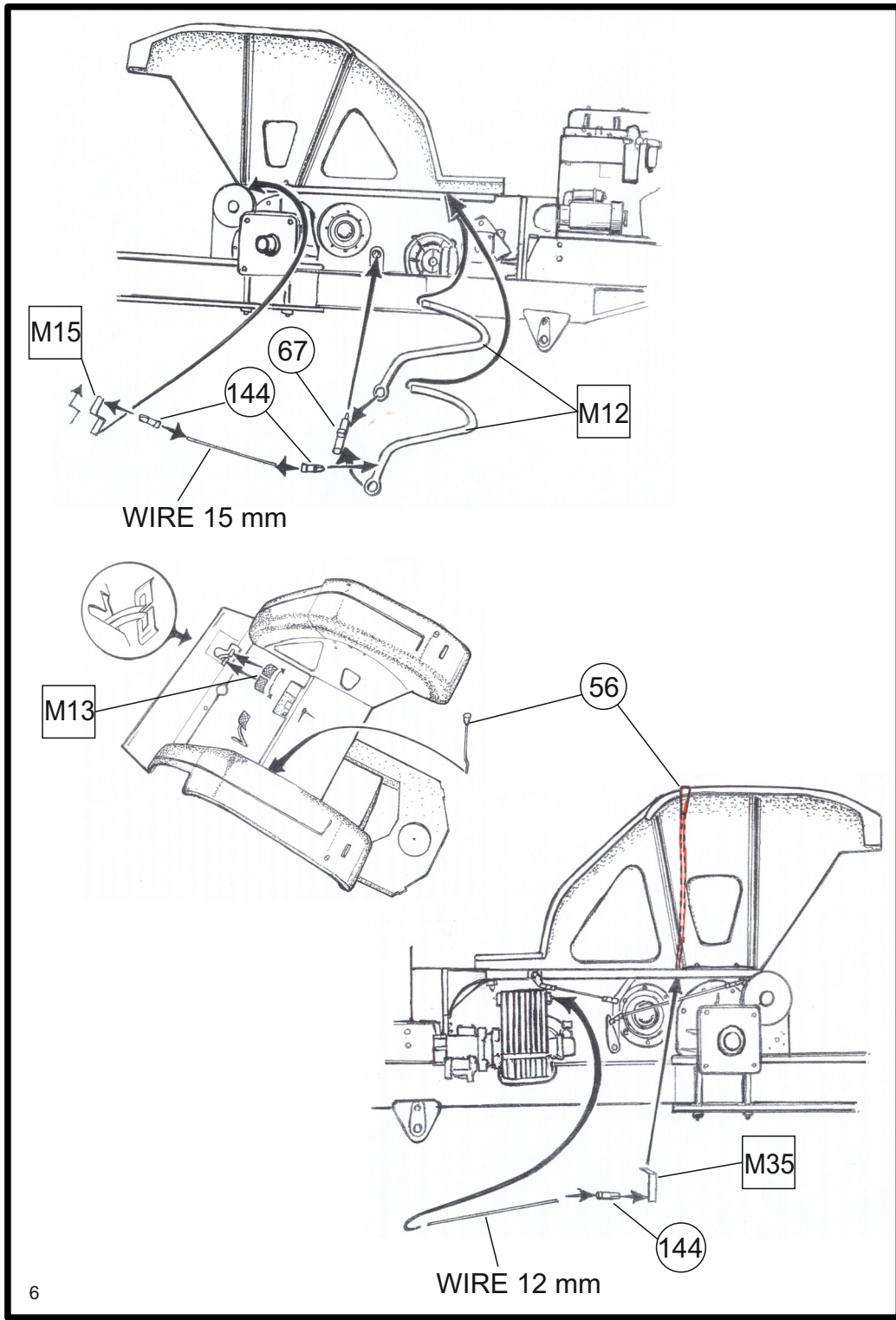


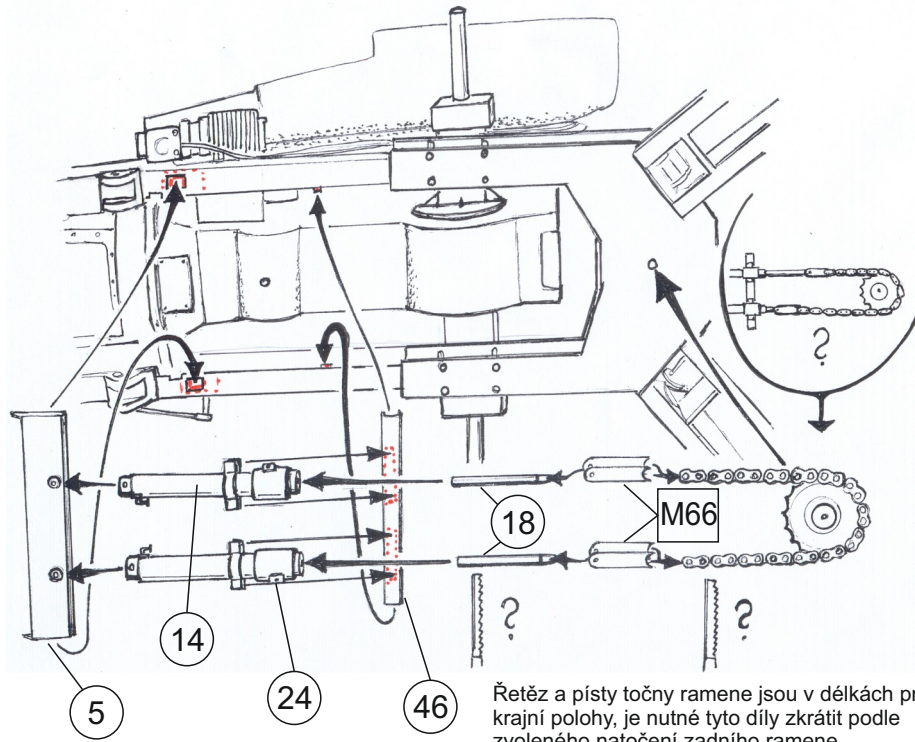
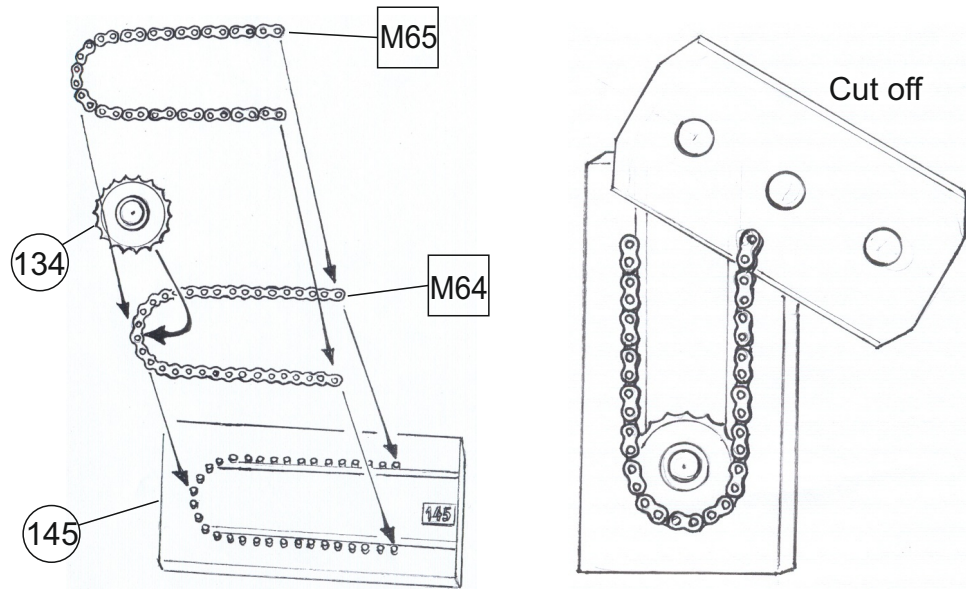




T9 = 27 mm
T10 = 27 mm

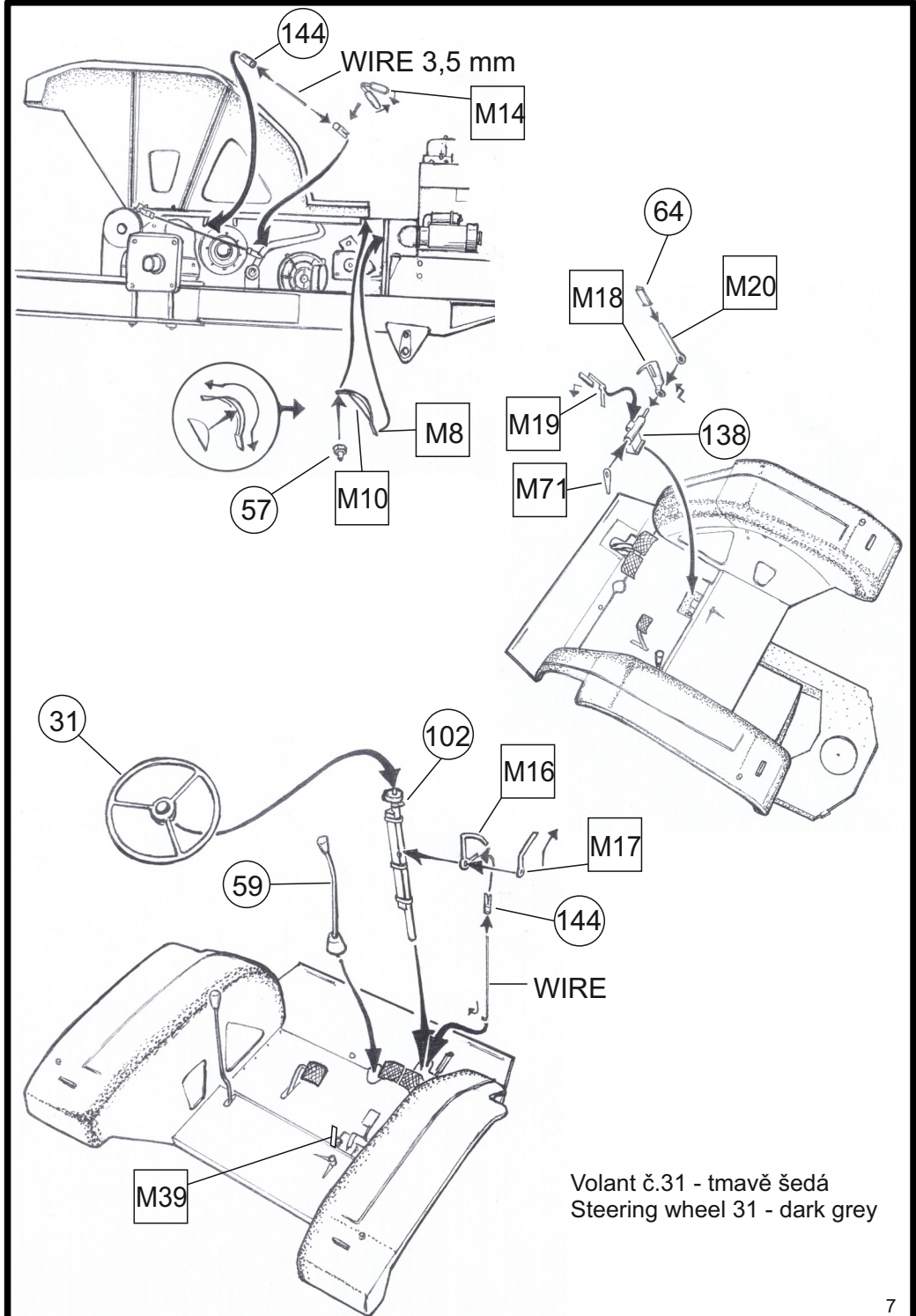




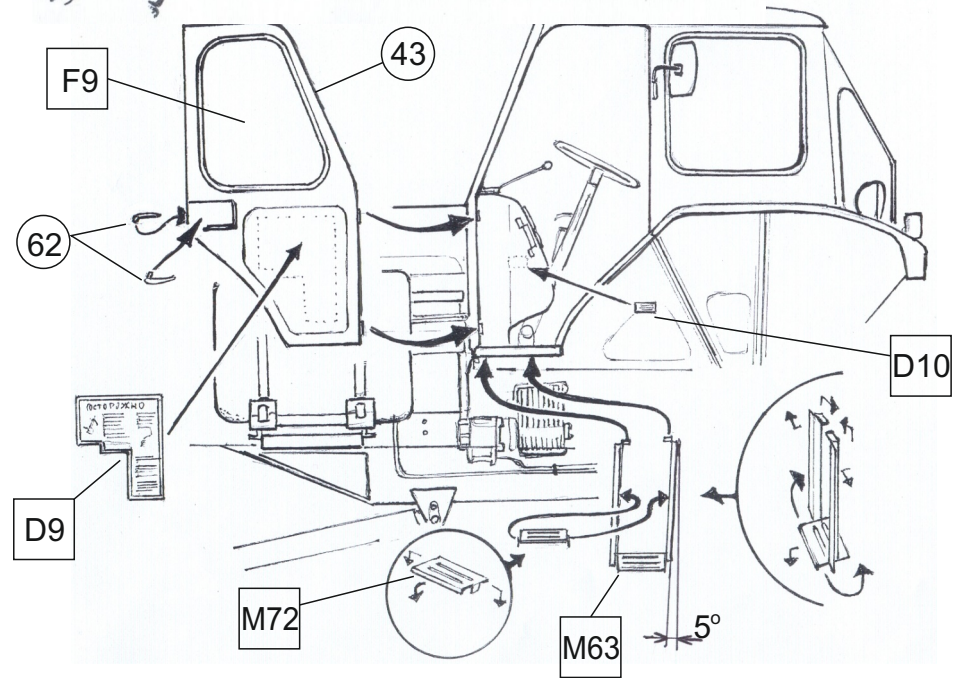
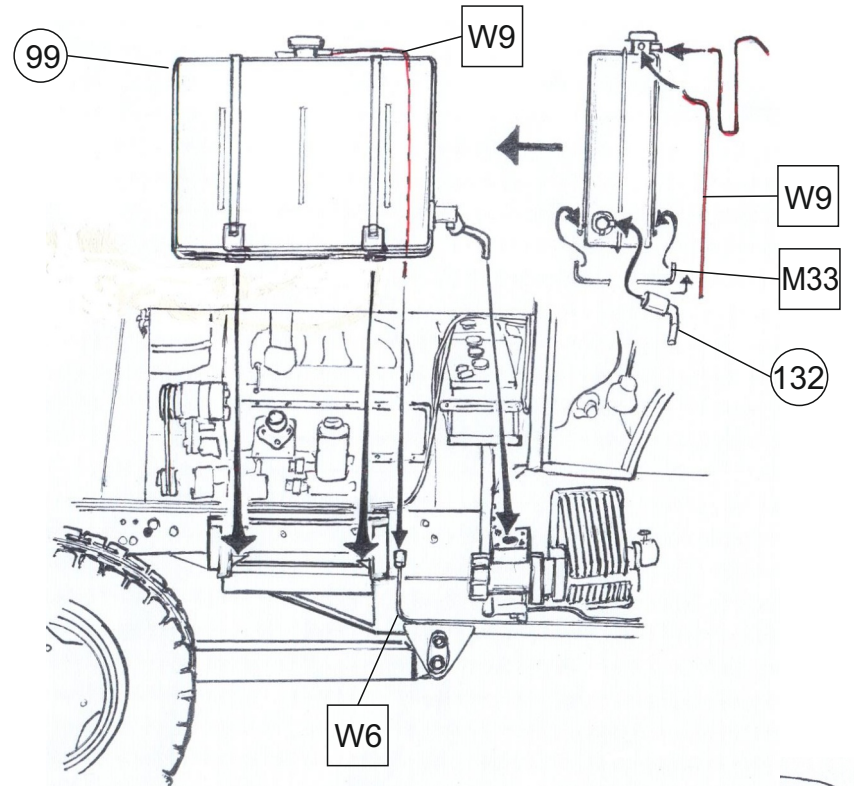
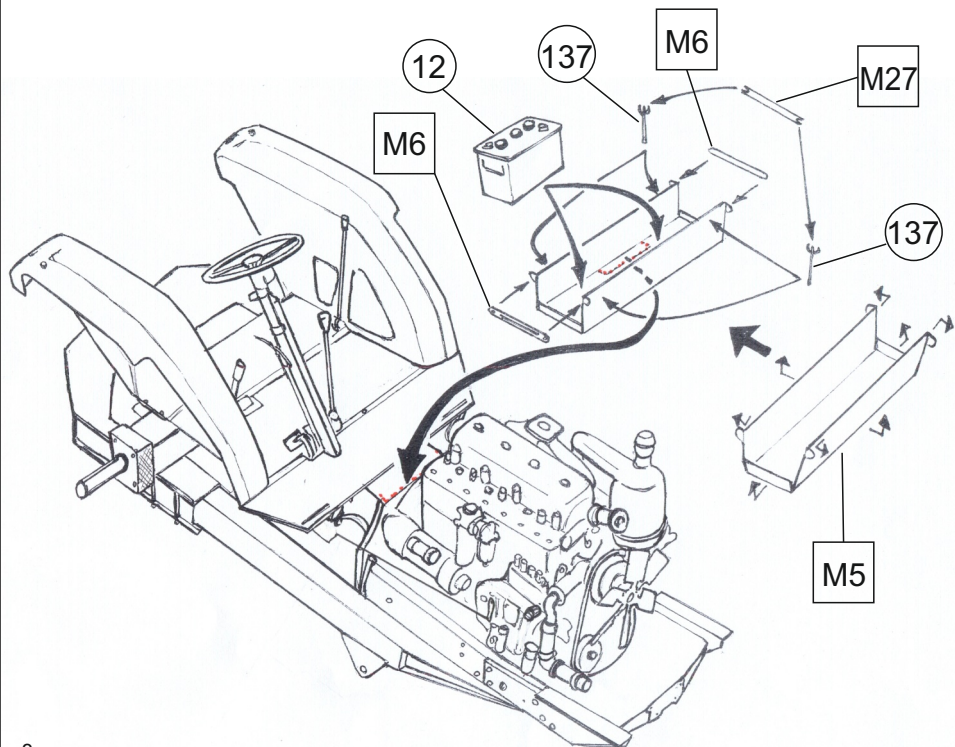
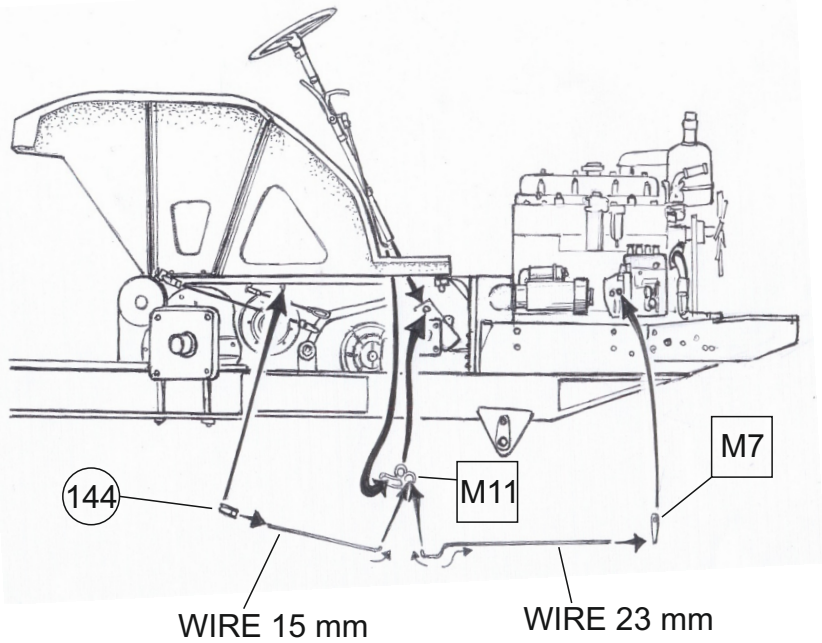


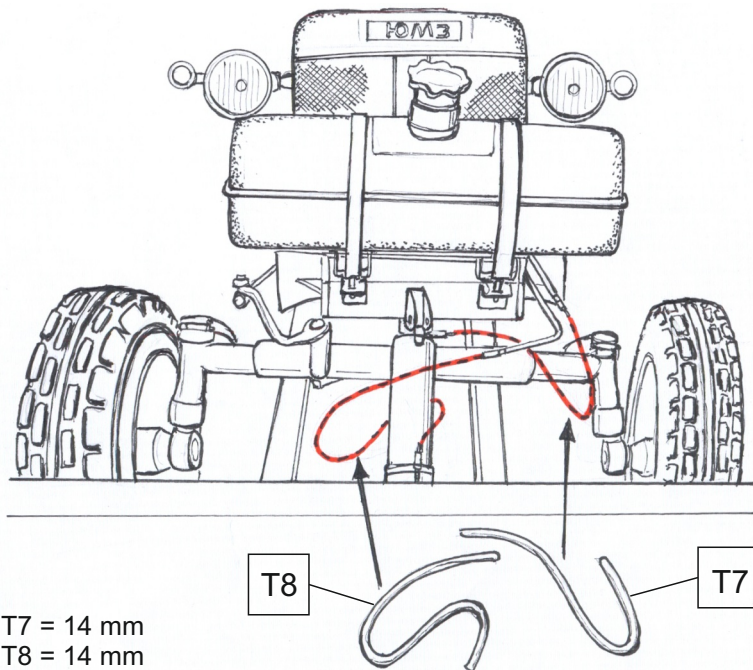
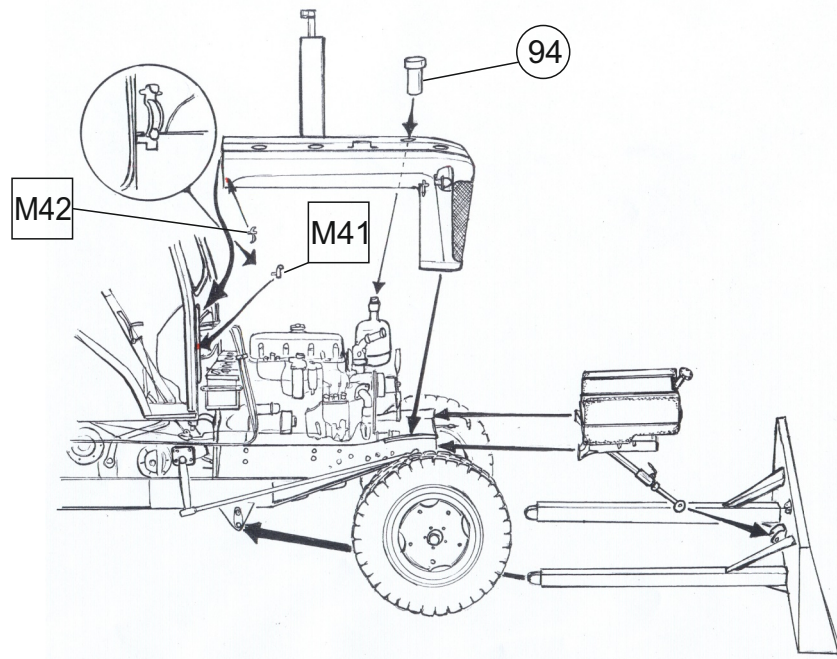
Řetěz a písty točny ramene jsou v délkách pro krajní polohy, je nutné tyto díly zkrátit podle zvoleného natočení zadního ramene.

Chain and pistons of rear gib turntable are length for final position, is necessary to cut it in agreement with turning of gib.



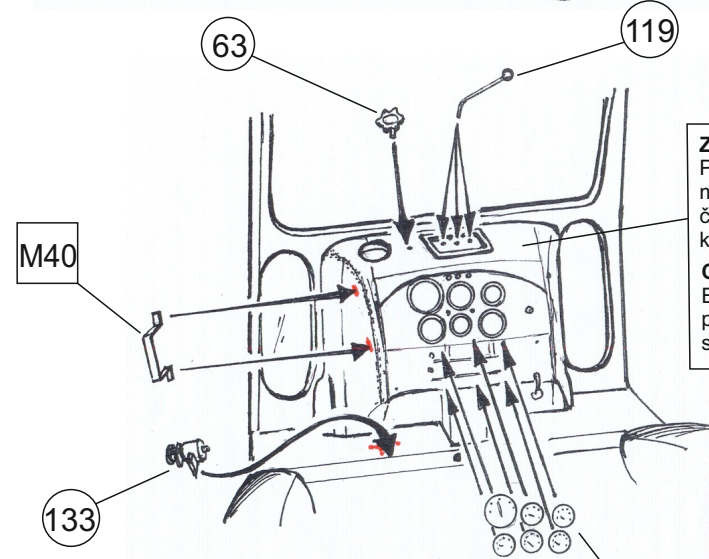
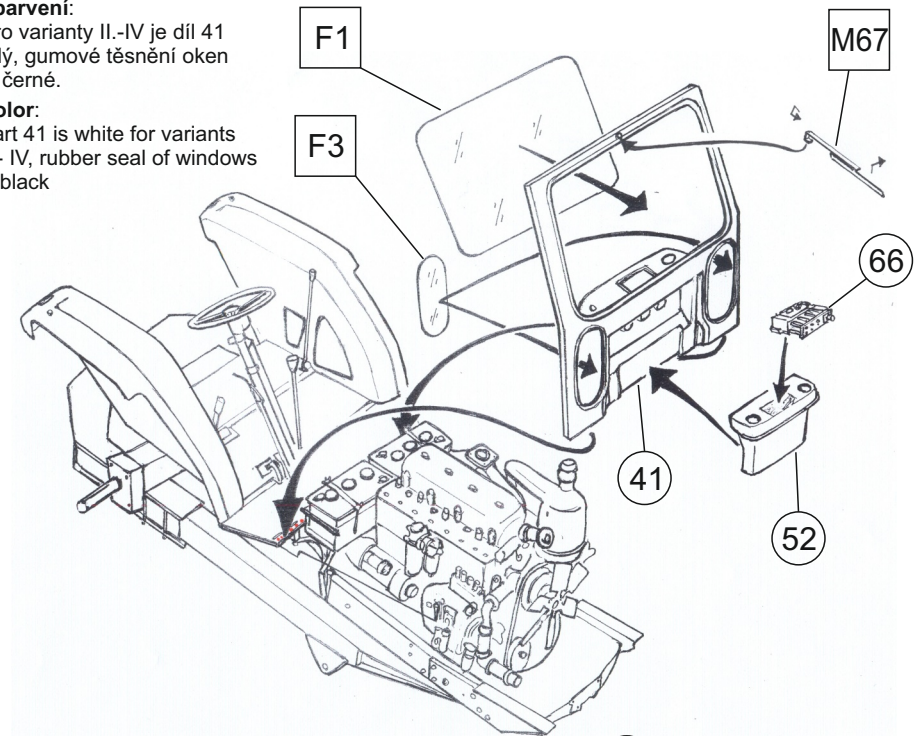
Volant č.31 - tmavě šedá
Steering wheel 31 - dark grey





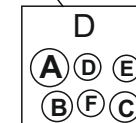
Zbarvení:
Pro varianty II.-IV je díl 41
bílý, gumové těsnění oken
je černé.

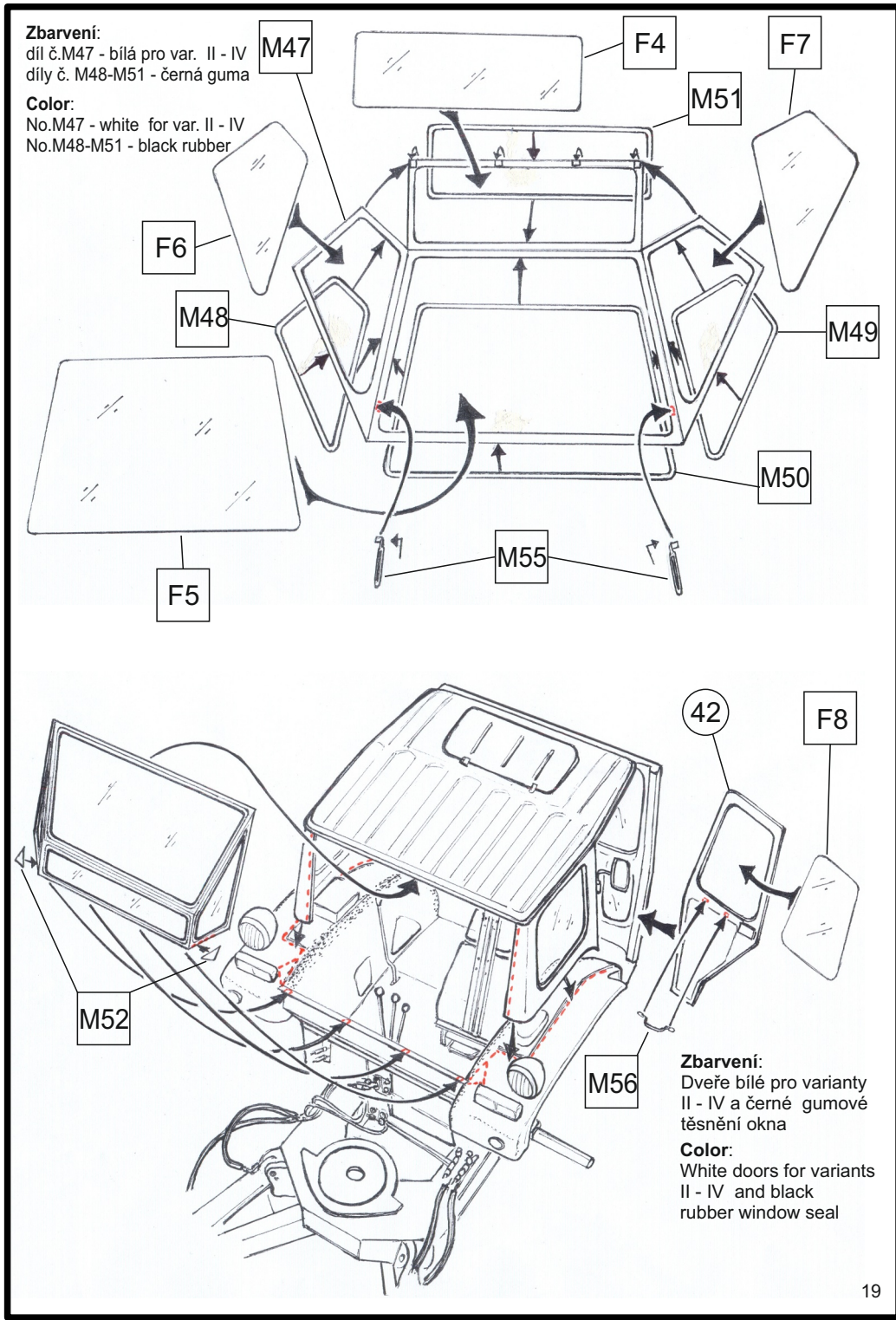
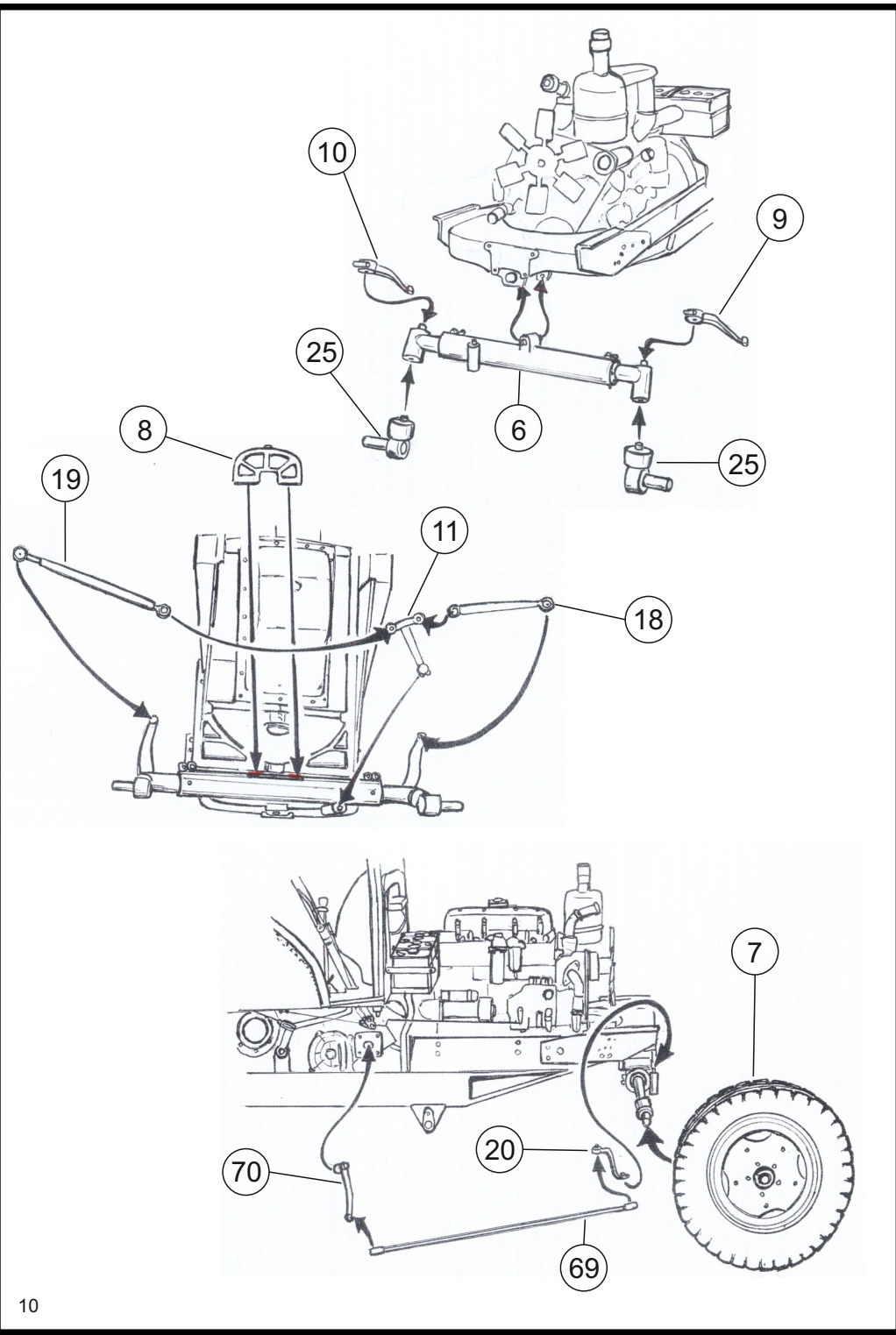
Color:
Part 41 is white for variants
II - IV, rubber seal of windows
is black



Zbarvení:
Pro varianty II - IV je středový
motorový kryt s palubní deskou
červený včetně vnější strany
k motoru.

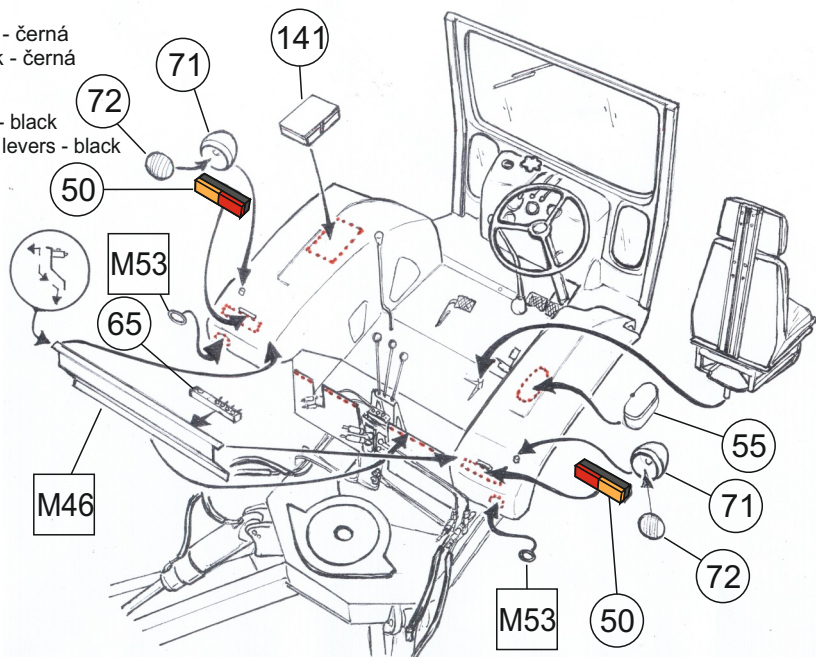
Color:
Engine cover with instrument
panel, inclusive outside engine
side is red for variants II - IV





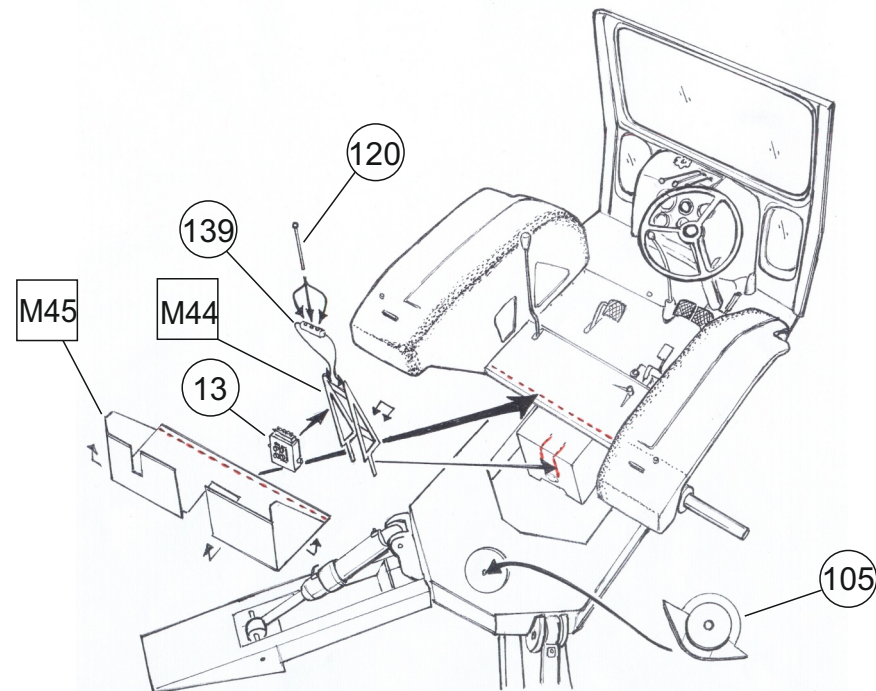
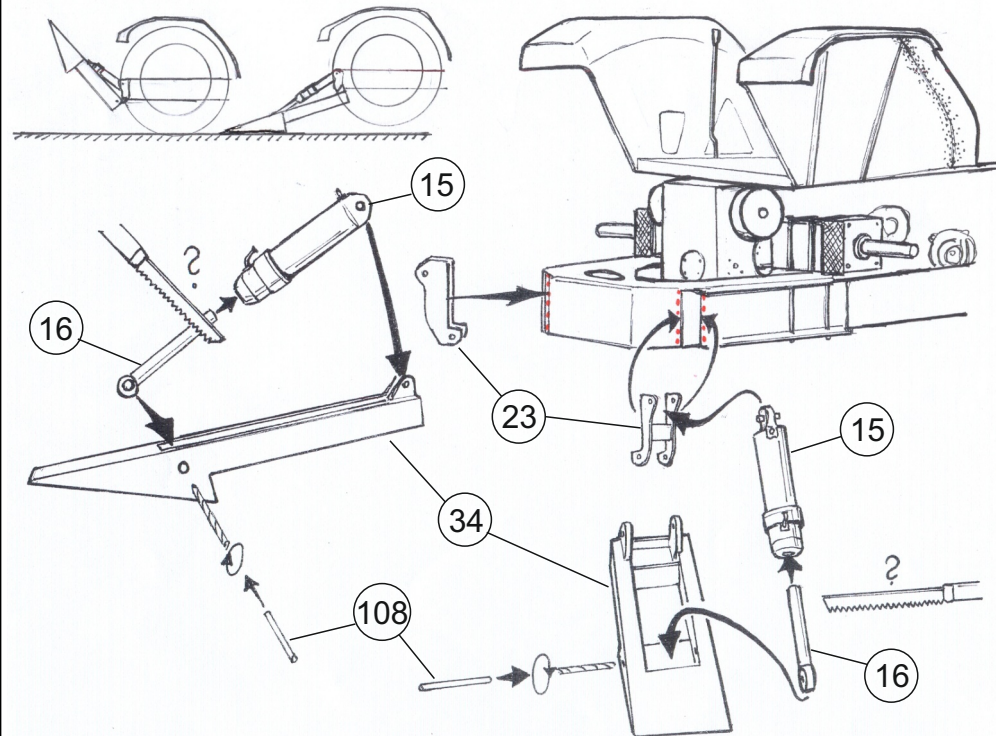
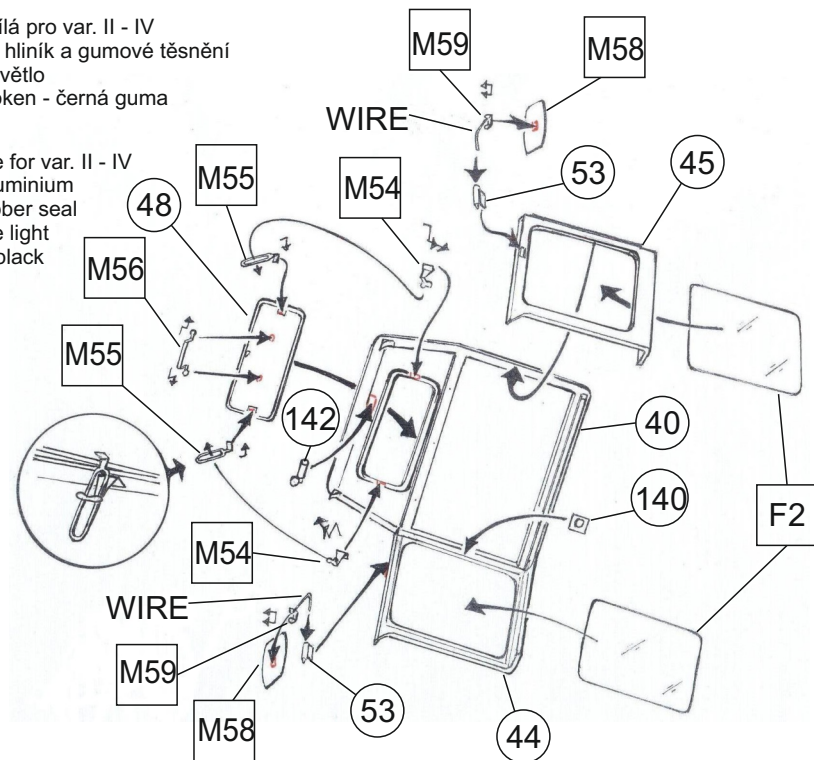
Zbarvení:
 Reflektory 71 - černá
 Koncovky pák - černá

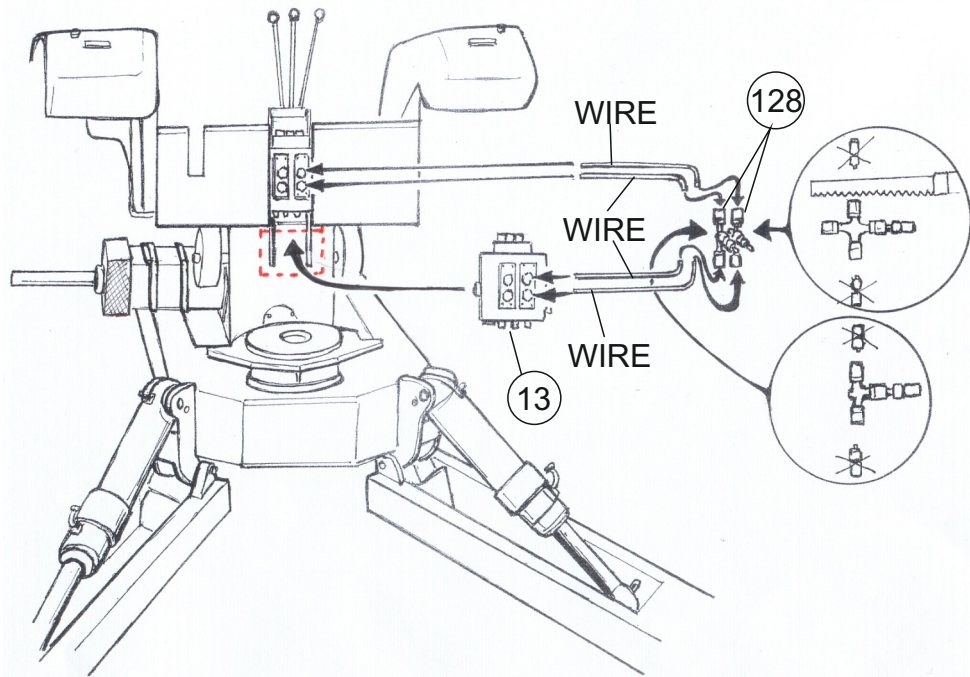
Color:
 Reflectors 71 - black
 End-pieces of levers - black



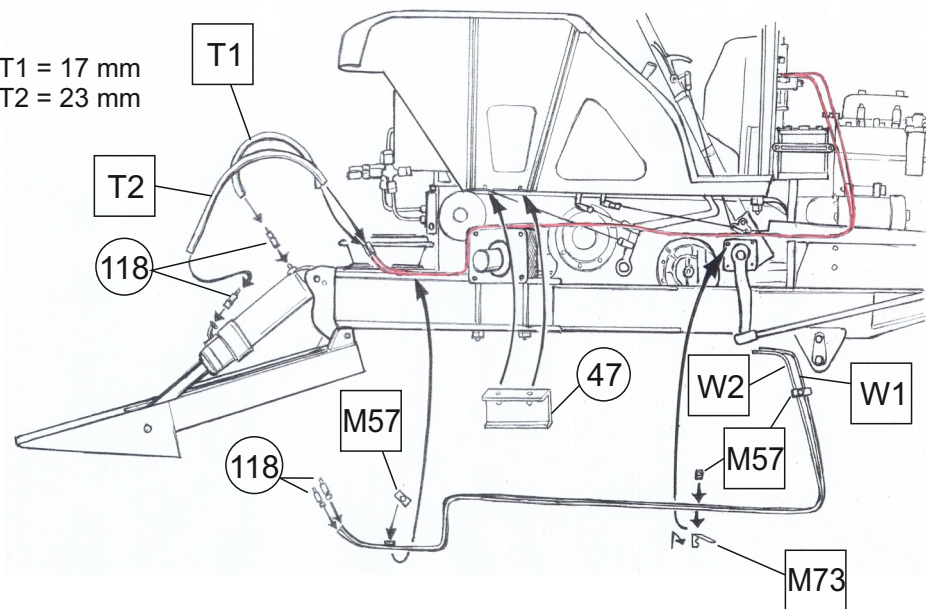
Zbarvení:
 Celá kabina je bílá pro var. II - IV
 Zpětná zrcátka - hliník a gumové těsnění
 č. 140 je vnitřní světlo
 Těsnění kolem oken - černá guma

Color:
 All cabin is white for var. II - IV
 Wing-mirror - aluminium
 and rubber seal
 No. 140 is inside light
 Window seal is black
 rubber

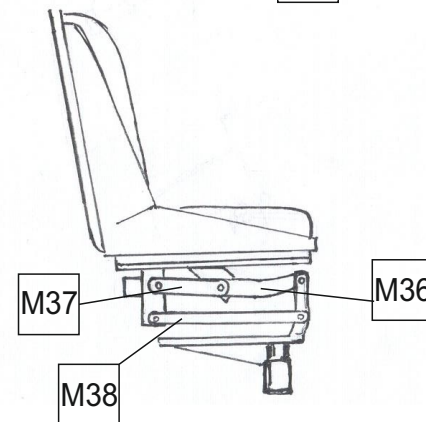
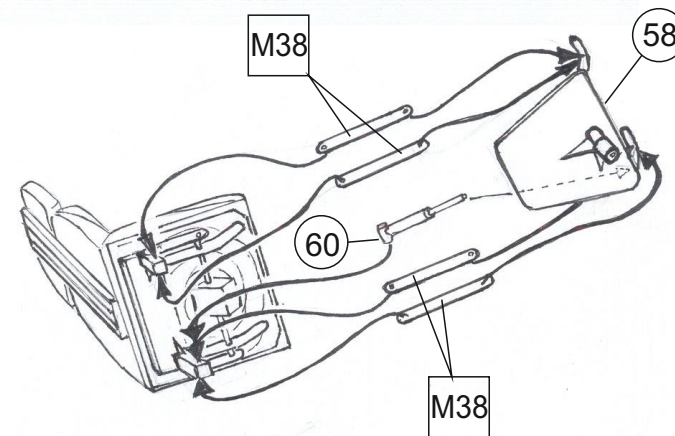
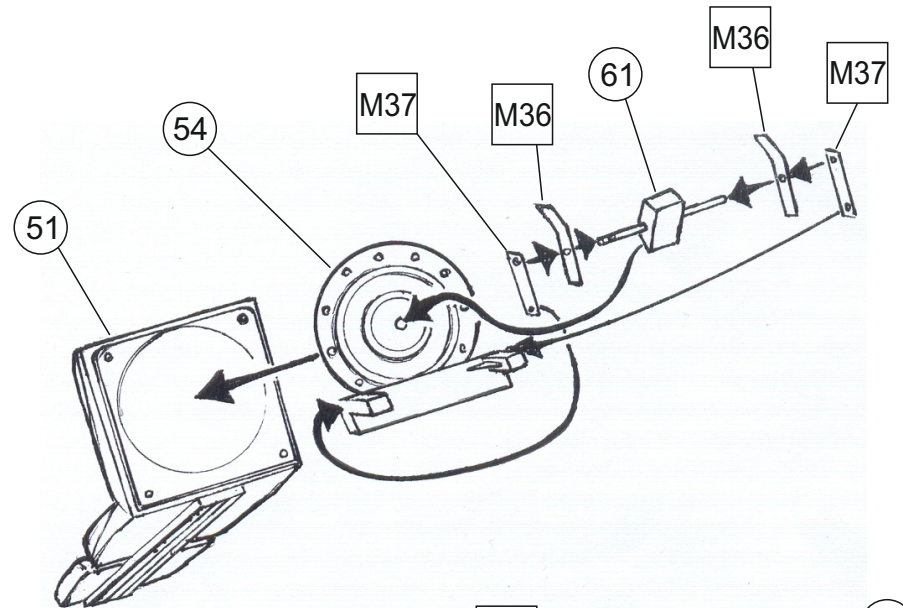


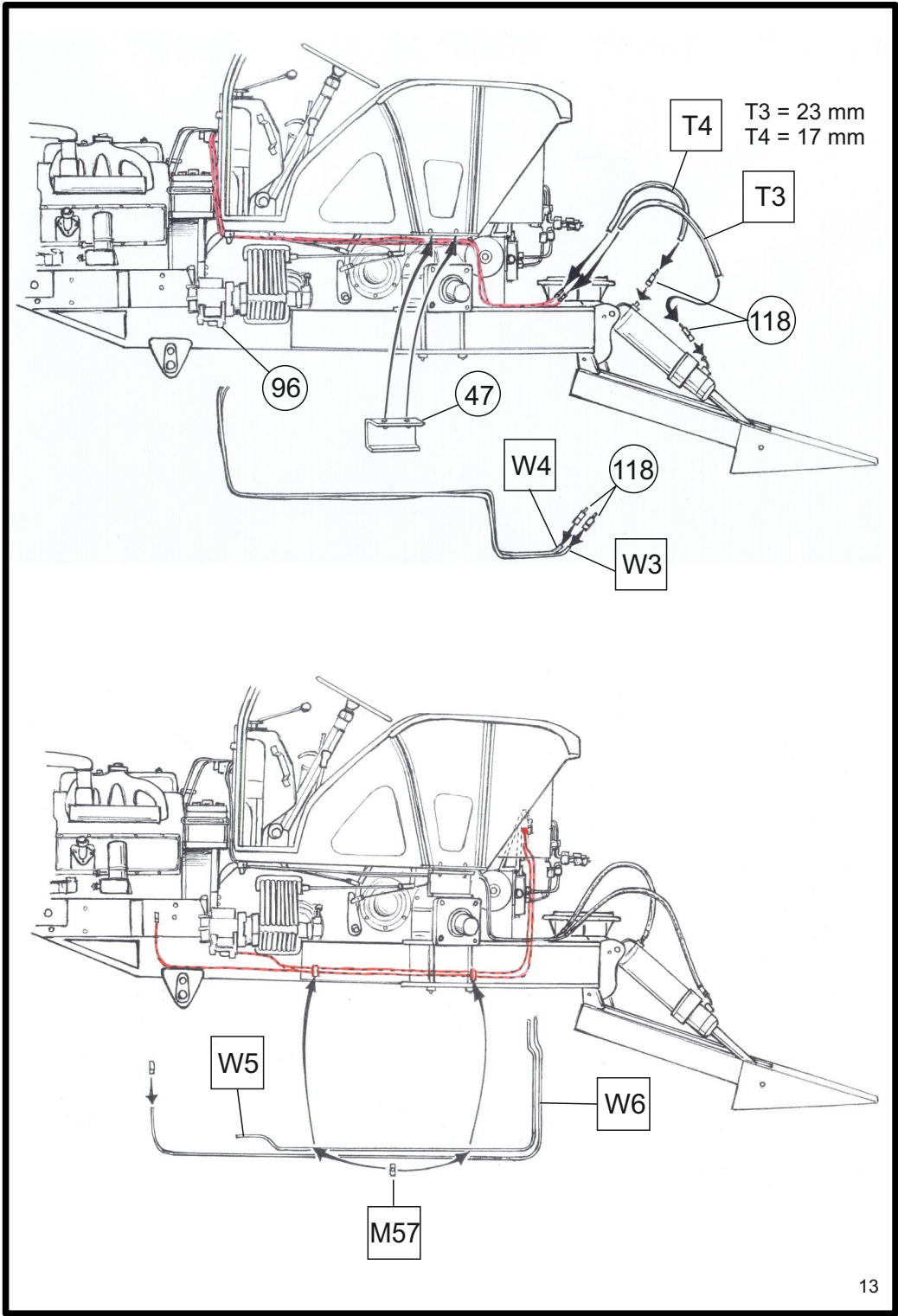
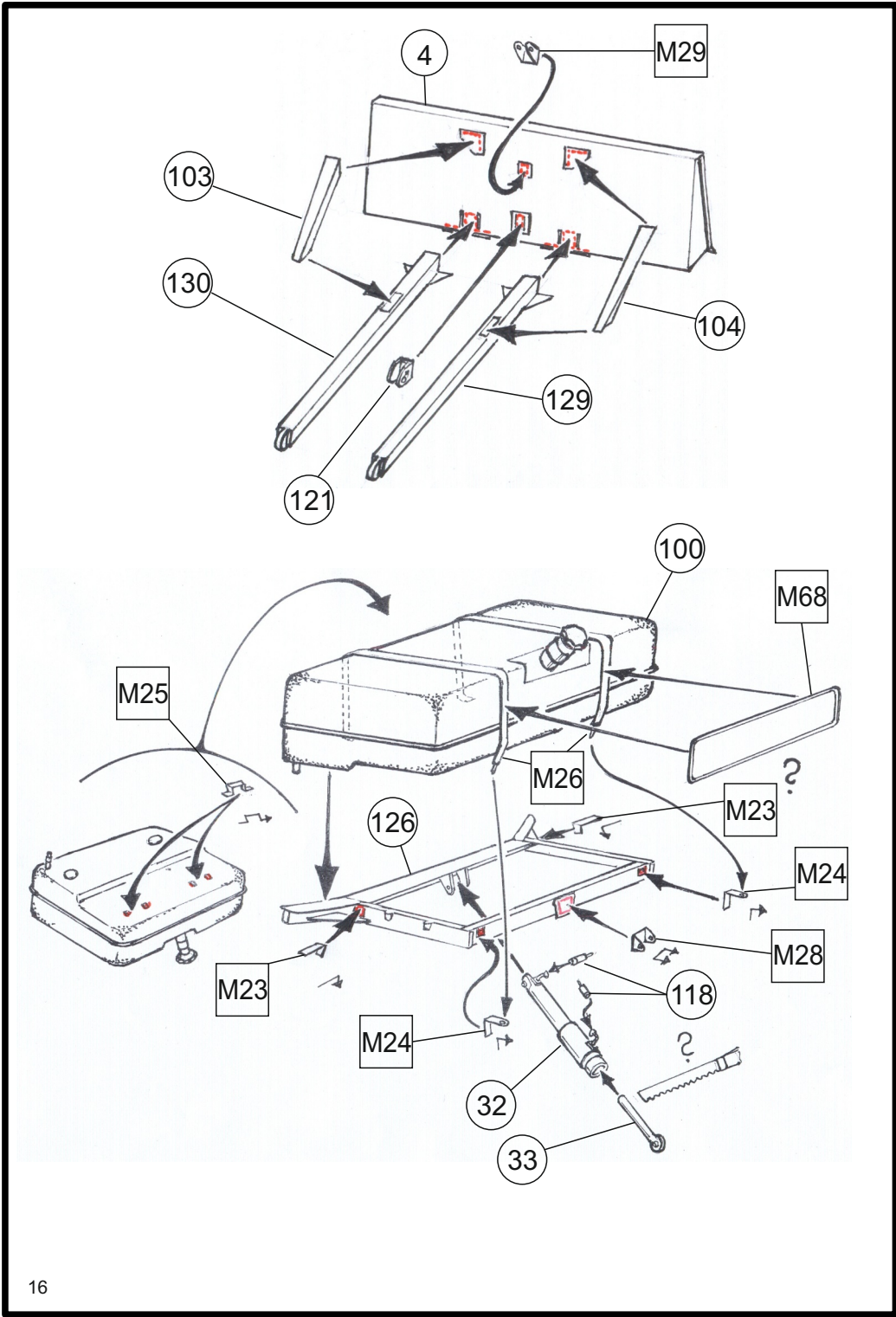


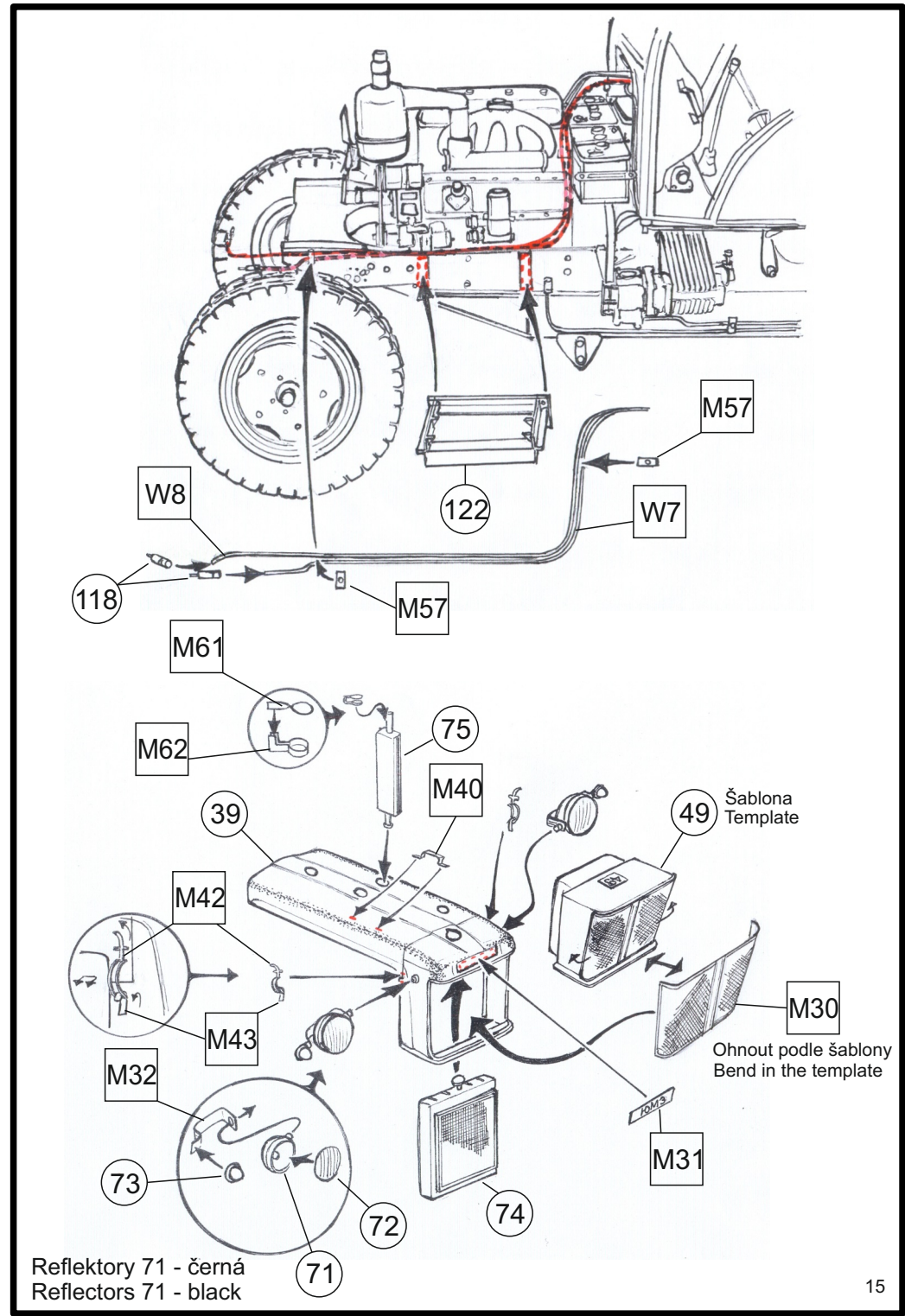
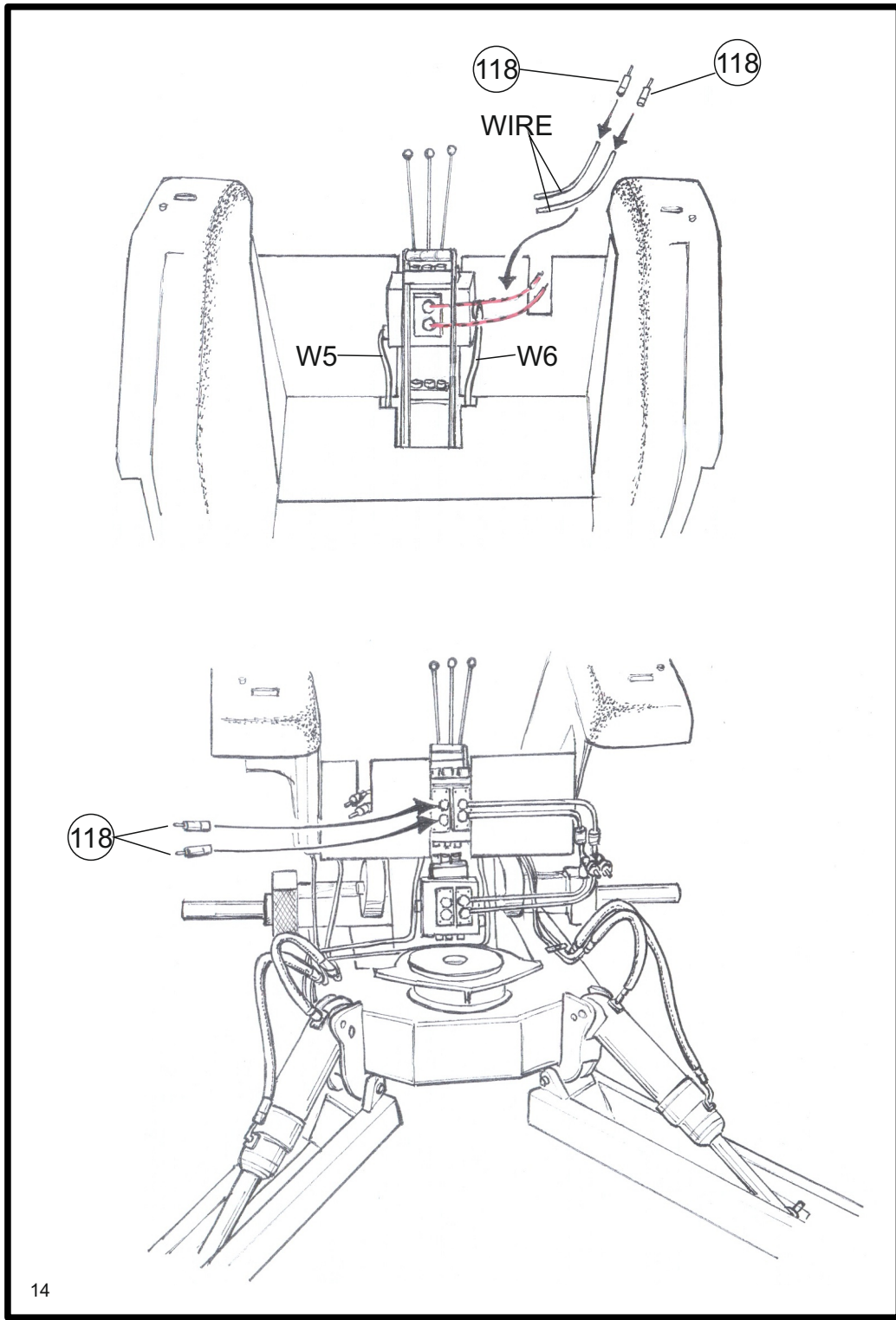
T1 = 17 mm
T2 = 23 mm



Všechny koncovky hadic hydrauliky jsou stříbrné
All end pieces of tubes of hydraulics system are silver







I.

Československo, Tábor, 70. léta

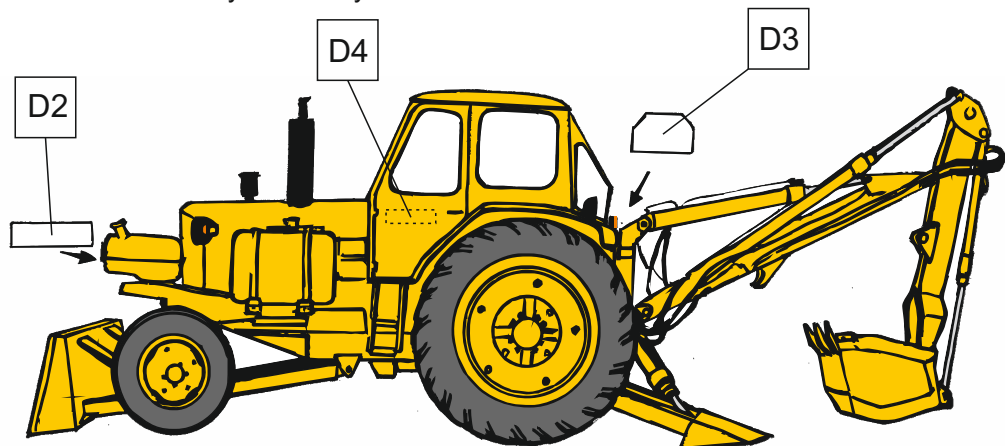
Celé vozidlo tmavě žluté, komín výfuku a kryt sání černý.

Písty hydrauliky chromové

Czechoslovakia, Tabor, 70th years

All vehicle is orange yellow, exhaust and intake covering is black.

Pistons of hydraulics system are chrome.



I.

Československo, Tábor, 70. léta

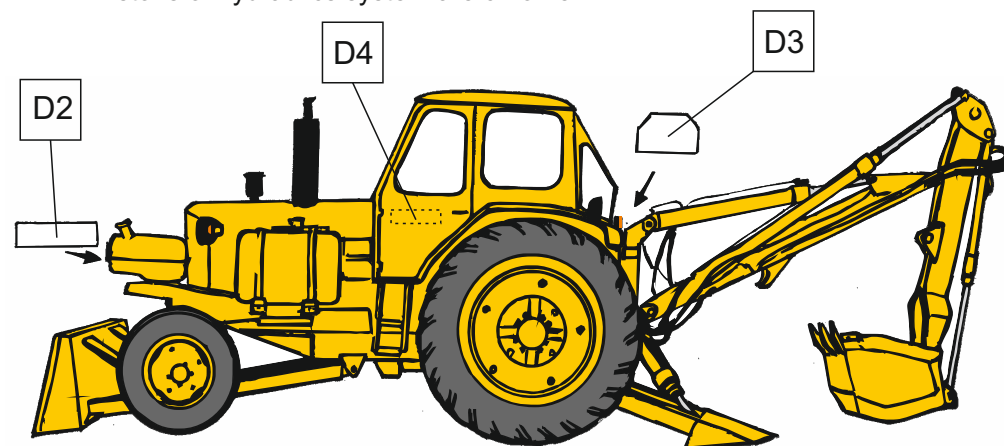
Celé vozidlo tmavě žluté, komín výfuku a kryt sání černý.

Písty hydrauliky chromové

Czechoslovakia, Tabor, 70th years

All vehicle is orange yellow, exhaust and intake covering is black.

Pistons of hydraulics system are chrome.



II.

Československo, České Budějovice 1982

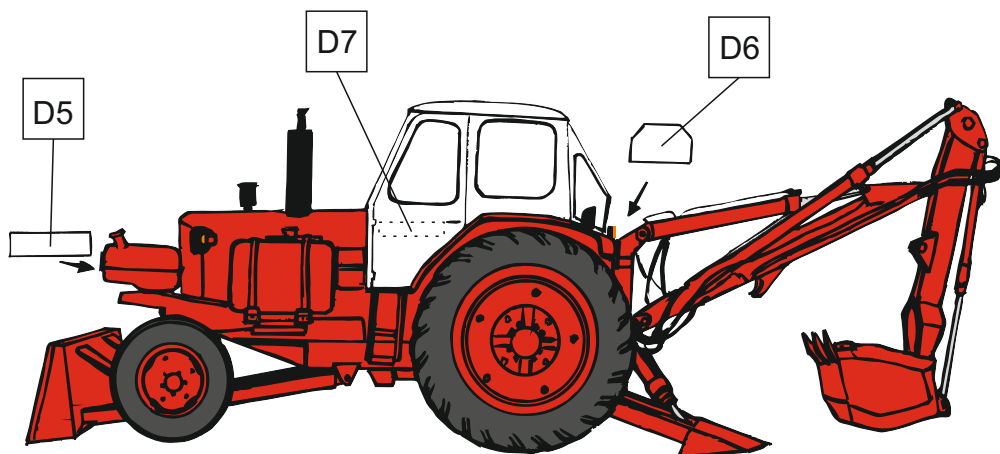
Vozidlo v kombinaci červené a bílé barvy, komín výfuku a kryt sání černý.

Písty hydrauliky chromové

Czechoslovakia, Ceske Budejovice 1982

Vehicle is in red and white color, exhaust and intake covering is black.

Pistons of hydraulics system are chrome.



II.

Československo, České Budějovice 1982

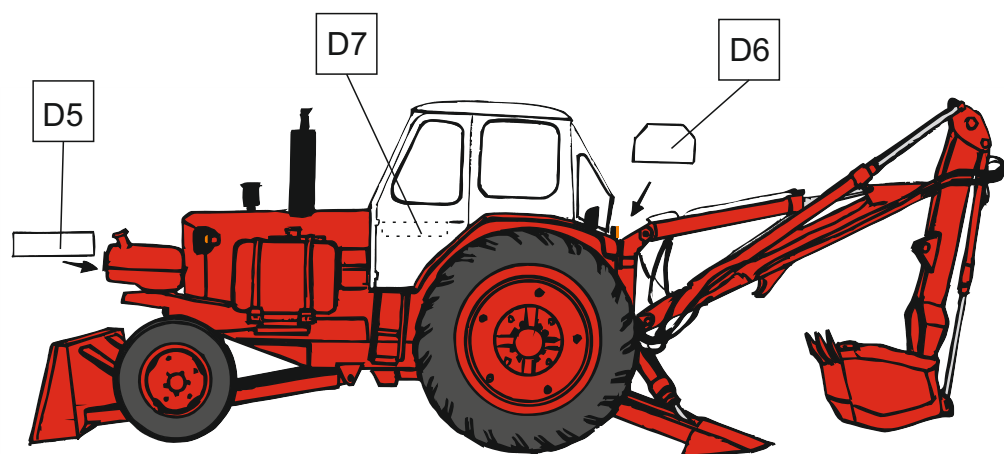
Vozidlo v kombinaci červené a bílé barvy, komín výfuku a kryt sání černý.

Písty hydrauliky chromové

Czechoslovakia, Ceske Budejovice 1982

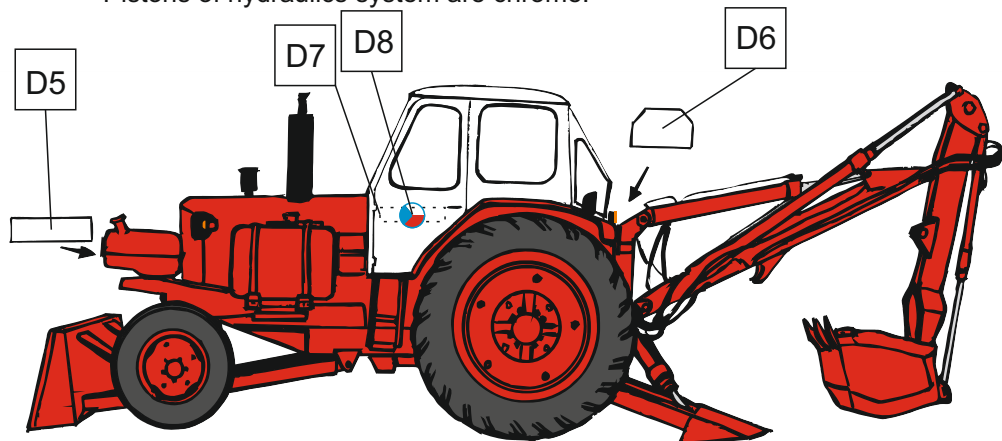
Vehicle is in red and white color, exhaust and intake covering is black.

Pistons of hydraulics system are chrome.



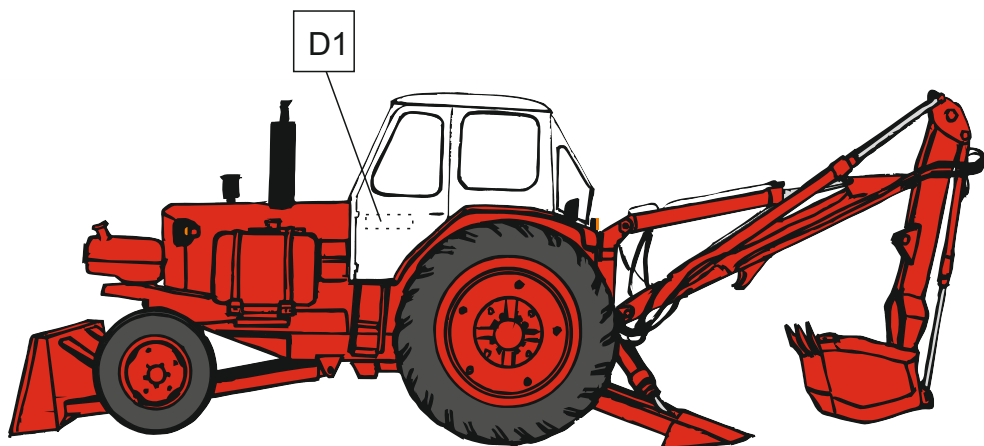
III. **Československo, České Budějovice, cvičná mobilizace 1983**
Vozidlo v kombinaci červené a bílé barvy, komín výfuku a kryt sání černý.
Písty hydrauliky chromové

Czechoslovakia, Ceske Budejovice, trial mobilization 1983
Vehicle is in red and white color, exhaust and intake covering is black.
Pistons of hydraulics system are chrome.



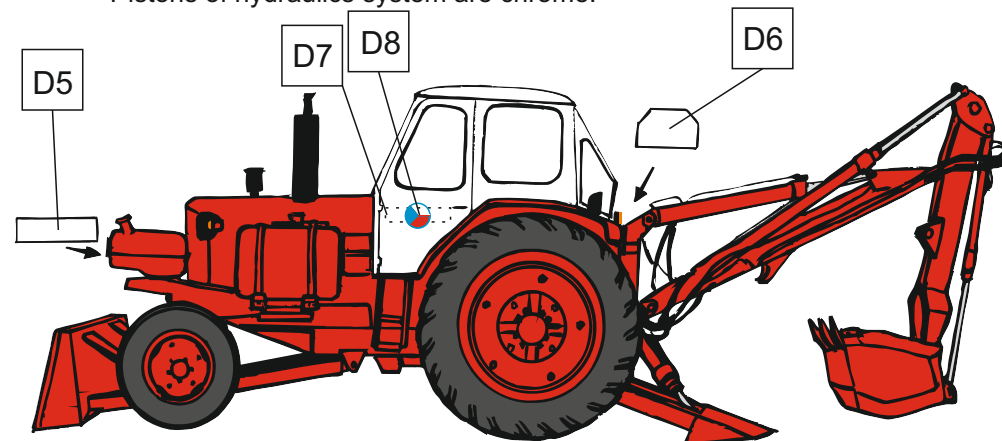
IV. **Československo, Milovice, 70. léta**
Vozidlo v kombinaci červené a bílé barvy, komín výfuku a kryt sání černý.
Písty hydrauliky chromové

Czechoslovakia, Milovice, 70th years
Vehicle is in red and white color, exhaust and intake covering is black.
Pistons of hydraulics system are chrome.



III. **Československo, České Budějovice, cvičná mobilizace 1983**
Vozidlo v kombinaci červené a bílé barvy, komín výfuku a kryt sání černý.
Písty hydrauliky chromové

Czechoslovakia, Ceske Budejovice, trial mobilization 1983
Vehicle is in red and white color, exhaust and intake covering is black.
Pistons of hydraulics system are chrome.



IV. **Československo, Milovice, 70. léta**
Vozidlo v kombinaci červené a bílé barvy, komín výfuku a kryt sání černý.
Písty hydrauliky chromové

Czechoslovakia, Milovice, 70th years
Vehicle is in red and white color, exhaust and intake covering is black.
Pistons of hydraulics system are chrome.

